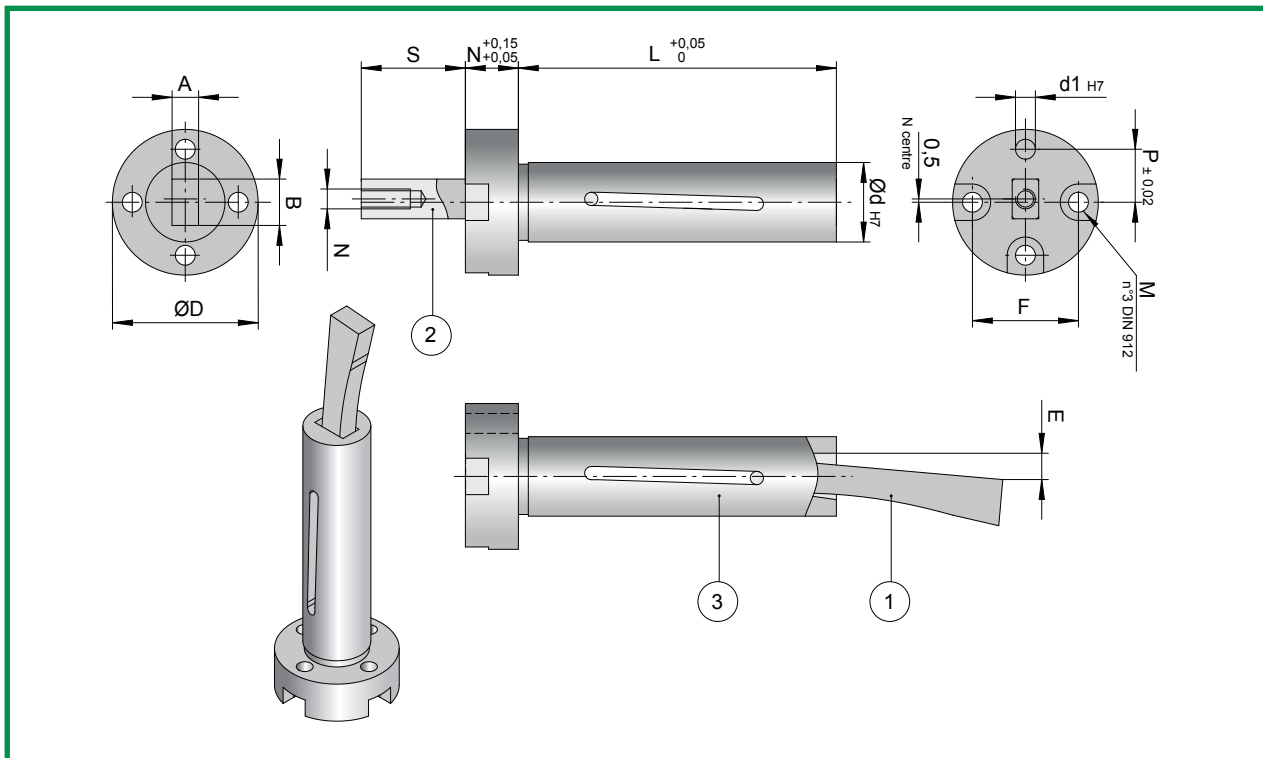


# MECHANICAL LIFTER





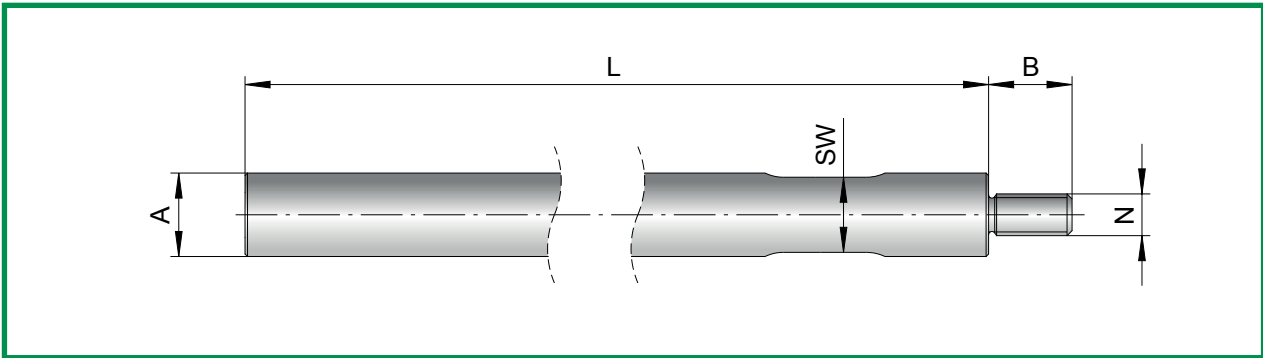
CODE: **CAM..**

CODE	A	B	D	d	d1	L	N	S	E	M	N	F	P
CAM04	4	7	22	12	3	48	8	25	4	M3	M3	16	8
CAM05	5	7	22	12	3	48	8	25	4	M3	M3	16	8
CAM06	6	10	25	15	3	58	8	28	4,8	M3	M5	19	9,5
CAM08	8	10	26	16	3	58	8	28	4,8	M3	M5	20	10
CAM10	10	12	29	19	3	58	8	30	5,4	M3	M5	23	11,5
CAM12	12	12	34	21	4	66	10	35	5,8	M4	M6	26	13
CAM14	14	15	38	24	4	66	10	35	5,8	M4	M6	30	15

POS.	CODE	MATERIAL	HARDNESS	COATING
1	BLADE	1.2343/44	50/52 HRC	DLC
2	ROD	1.2343/44	50/52 HRC	
3	BODY	1.2842	54/56 HRC	

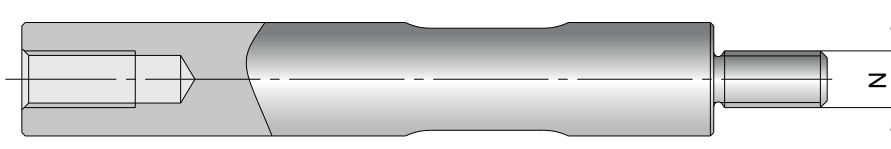
## CHARACTERISTICS

1. FULL MECHANICAL SYSTEM;
2. DLC COATED BLADE ENSURES LOW WEAR AND SELF-LUBRICATING FUNCTION;
3. POSSIBILITY TO MACHINE THE BODY;
4. SPECIAL SIZES AVAILABLE ON DEMAND;
5. AVAILABLE IN DOUBLE LAYOUT AS SPECIAL ON DEMAND.



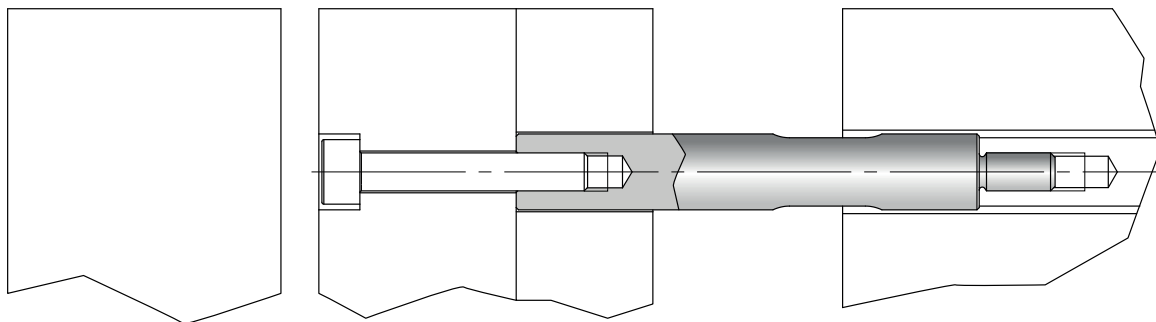
CODE	A	B	N	L	SW	LIFTER
PFC-45	8	10	M3	300	7	CAM04
						CAM05
PFC-6810	10	10	M5	300	9	CAM06
						CAM08
						CAM10
PCF-1214	12	12	M6	300	11	CAM12
						CAM14

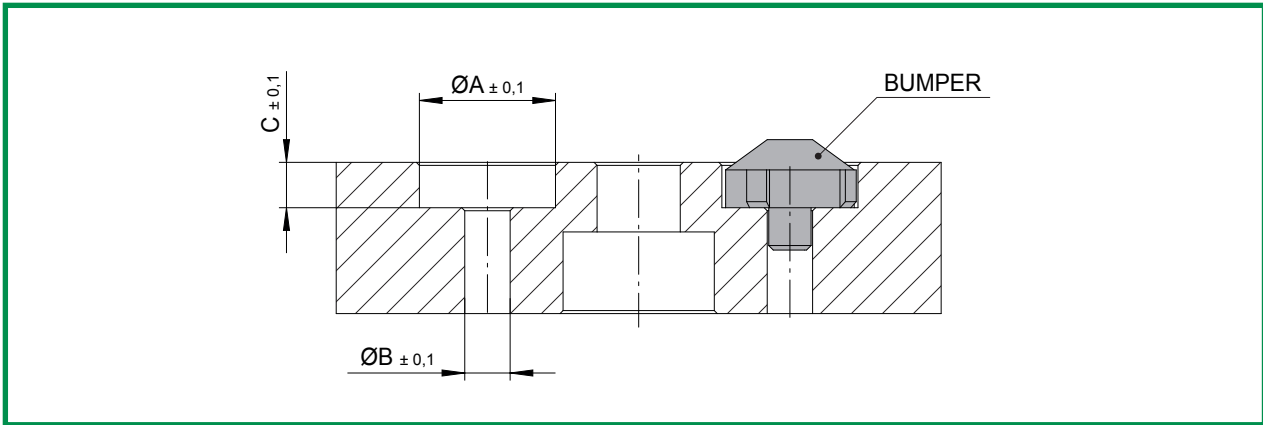
Mat.: 7225. Hardness:670 HV05  
Nitrided depth 0,1mm



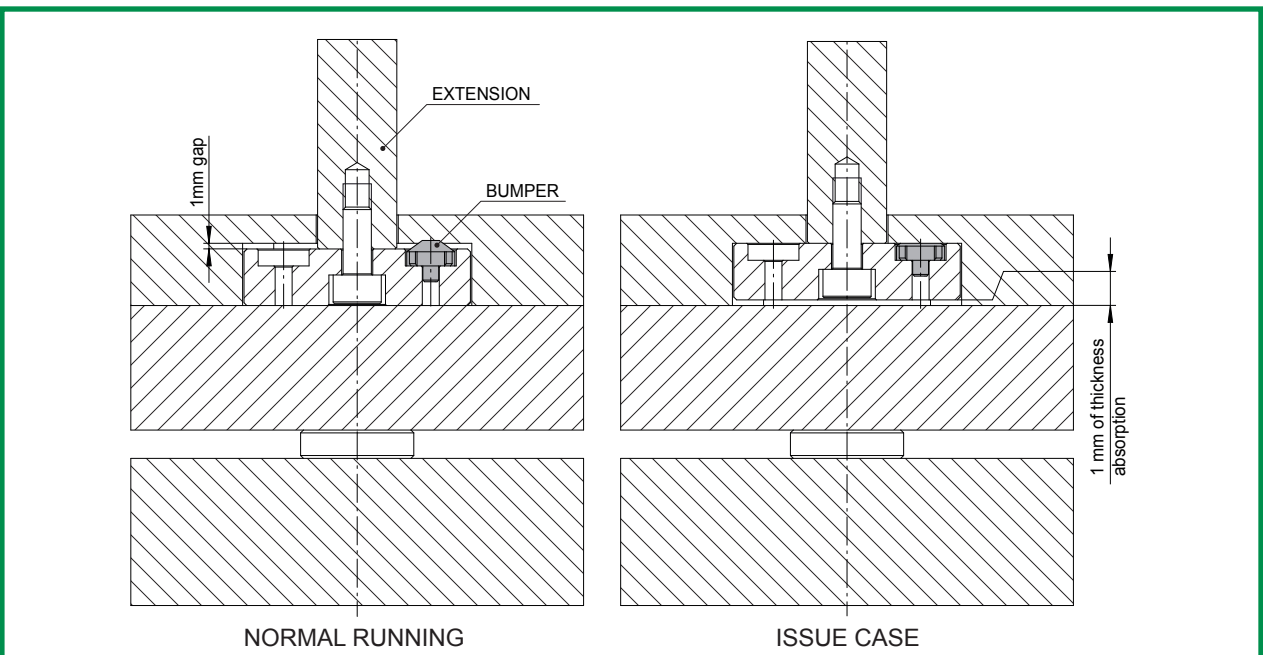
THE ROD EXTENSION CODE PFC-.. CAN BE SHORTENED AT THE REQUIRED LENGTH AND THREADED ON THE BACK SIDE AS SHOWN IN THE DRAWING.

THE ROD EXTENSION IS FIXED TO THE LIFTER BY THE MEANS OF THE THREAD "N" AND TO THE EJECTOR PLATE WITH A SCREW.

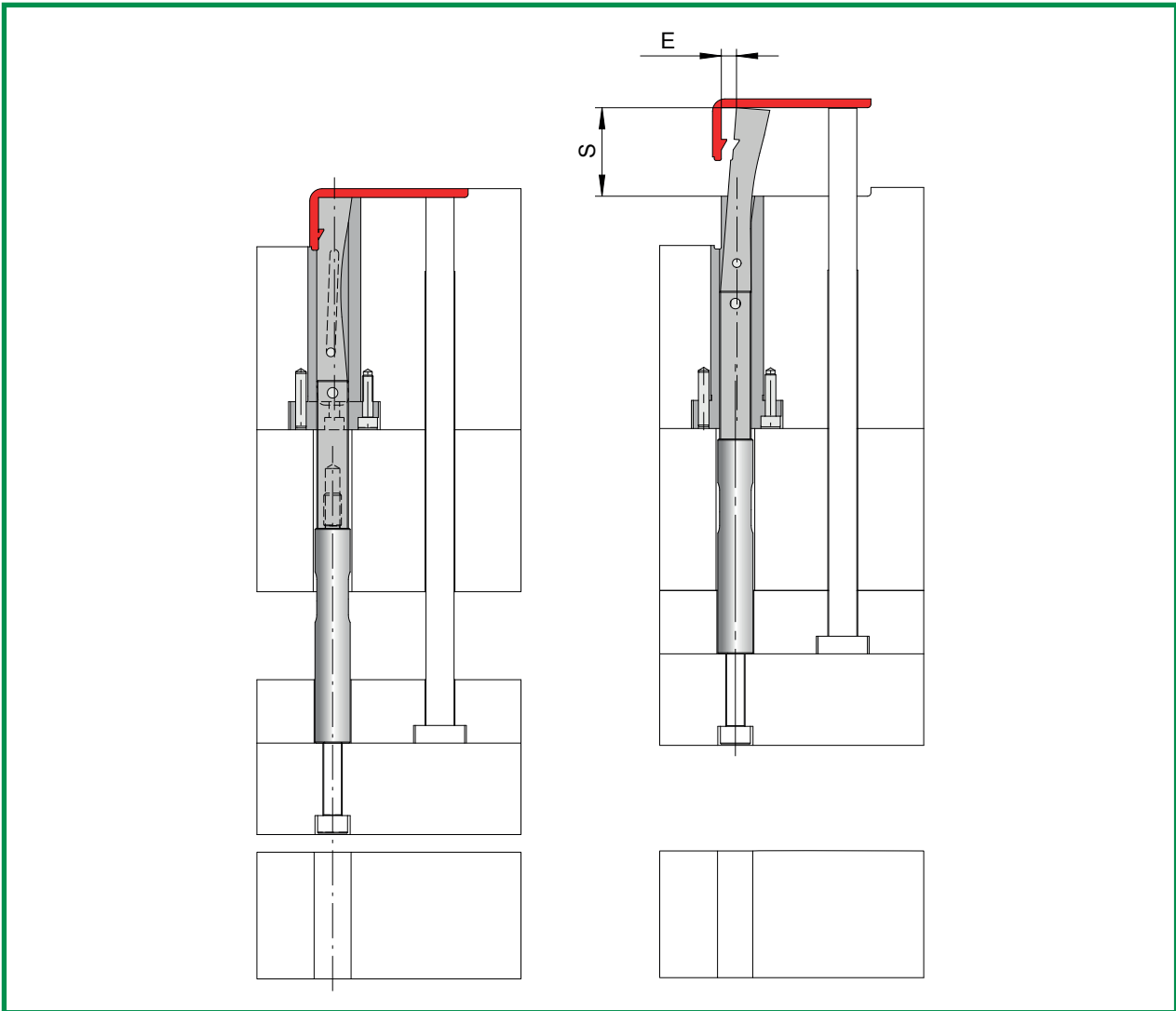




CODE	A	B	C
BUMPER6	6	2	2
BUMPER9	9	3	3

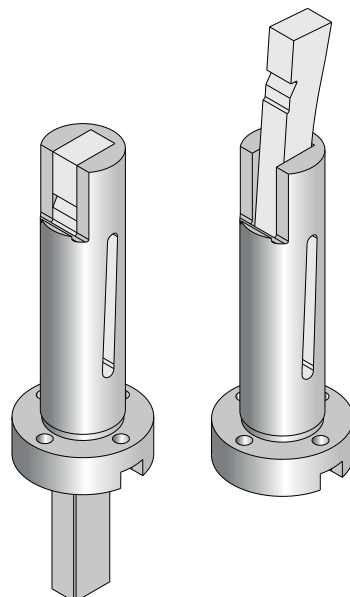


THE BUMPER CUSHIONING ELEMENT CAN BE INSERTED IN A PLATE TO WHICH THE ROD EXTENSION IS ATTACHED. IN CASE OF PLASTIC INTRUSION UNDER THE LIFTER BLADE, THE BUMPER SYSTEM WILL ABSORB THE TENSION IN THE MECHANICAL ELEMENTS OF THE LIFTER, PRESERVING ITS INTEGRITY.

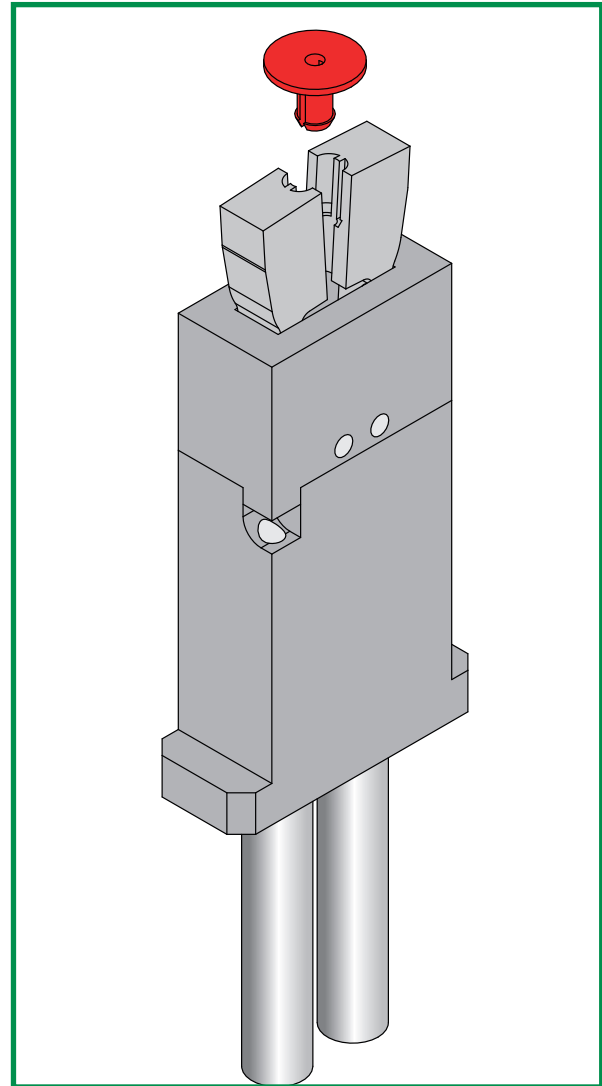
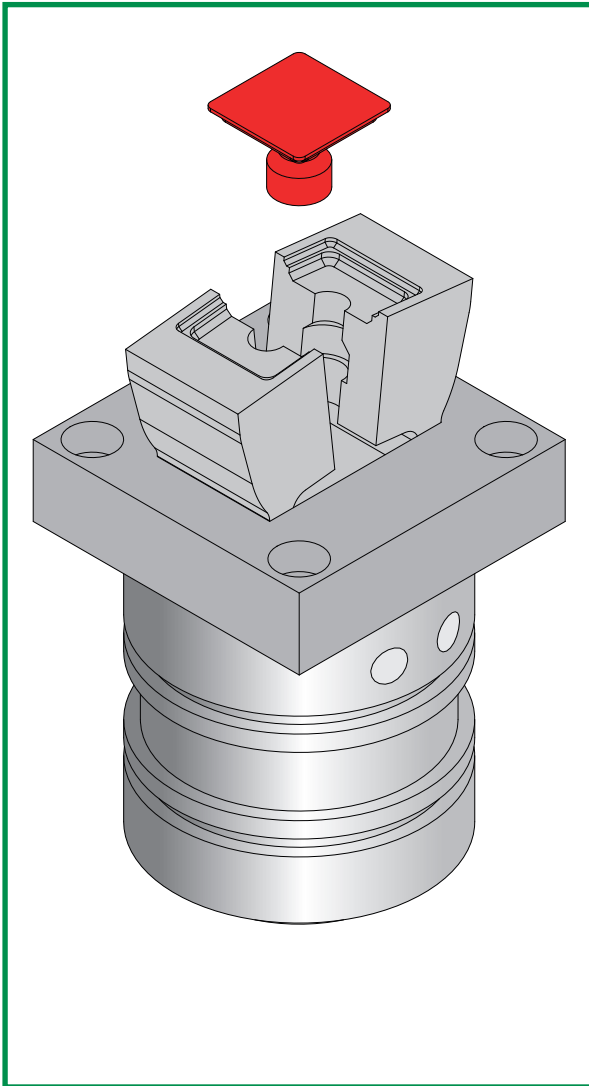


THE LIFTER BODY CAN BE MACHINED ACCORDING TO INJECTED PART GEOMETRY.

FOR MORE DETAILS CONTACT OUR TECHNICAL TEAM.



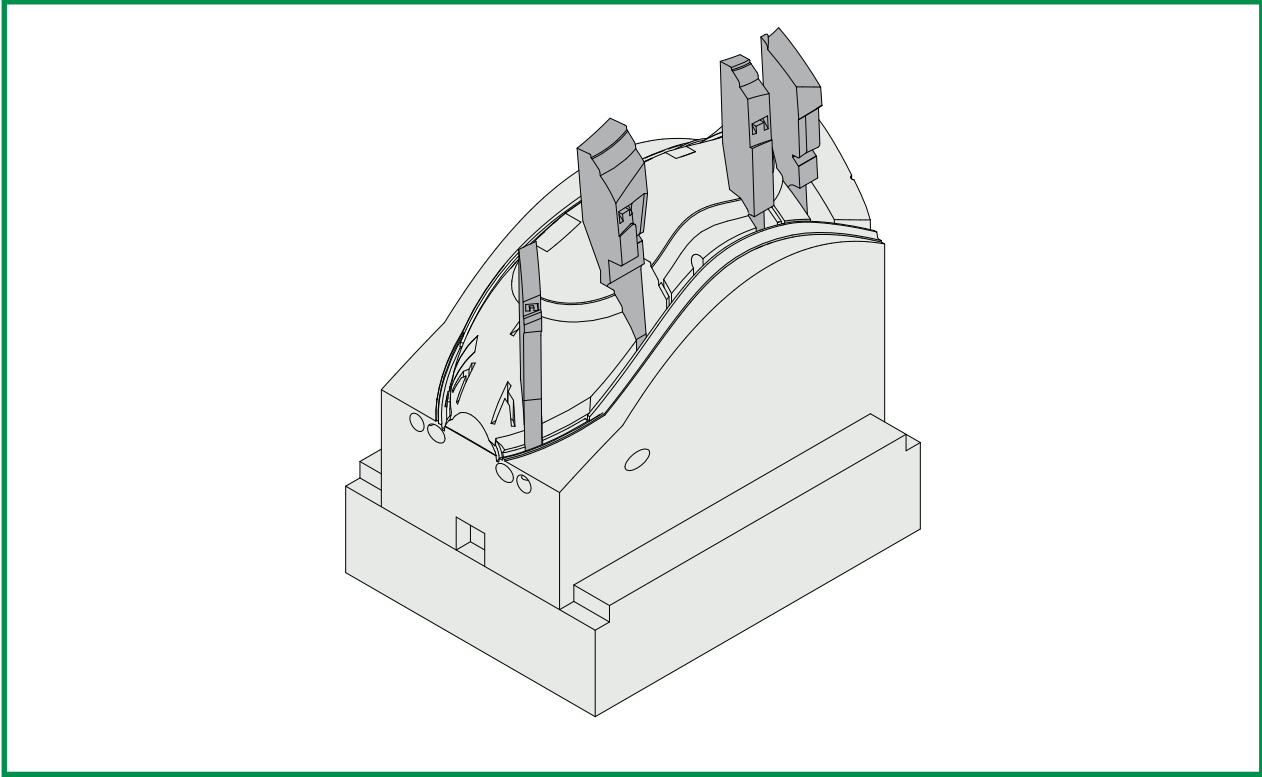
## CUSTOM LIFTERS



IT IS POSSIBLE TO PRODUCE CUSTOM DOUBLE LIFTERS WITH RECTANGULAR OR CYLINDRICAL BODY.

FOR MORE DETAILS CONTACT OUR TECHNICAL TEAM.

## CUSTOM LIFTERS



IT IS POSSIBLE TO PRODUCE CUSTOM INSERTS WITH INTEGRATED LIFTERS.

FOR MORE DETAILS CONTACT OUR TECHNICAL TEAM.







**ERMANNNO BALZI**

Viale Enrico Mattei, 13

25080 Mazzano (Brescia)

Tel: +39 0302120868

E-mail: [info@ermannnobalzi.com](mailto:info@ermannnobalzi.com)