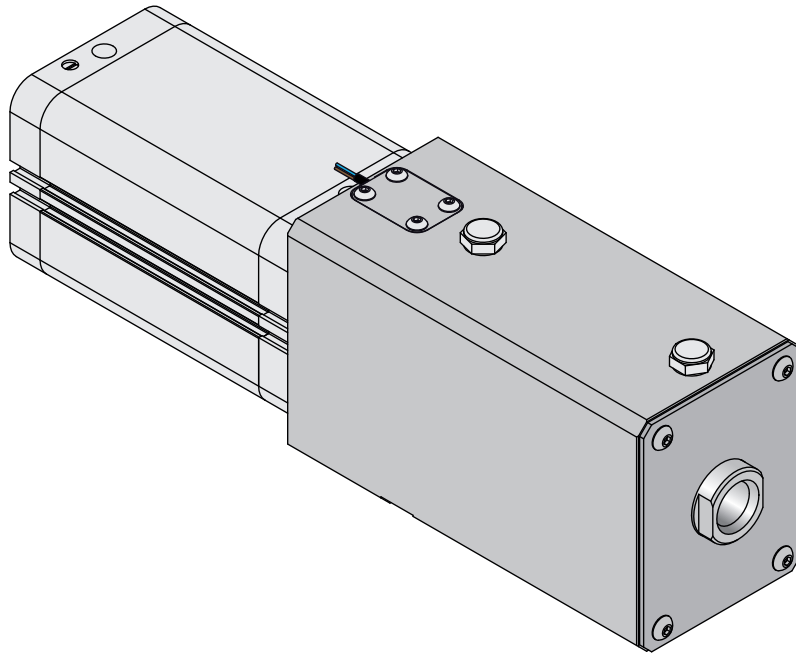
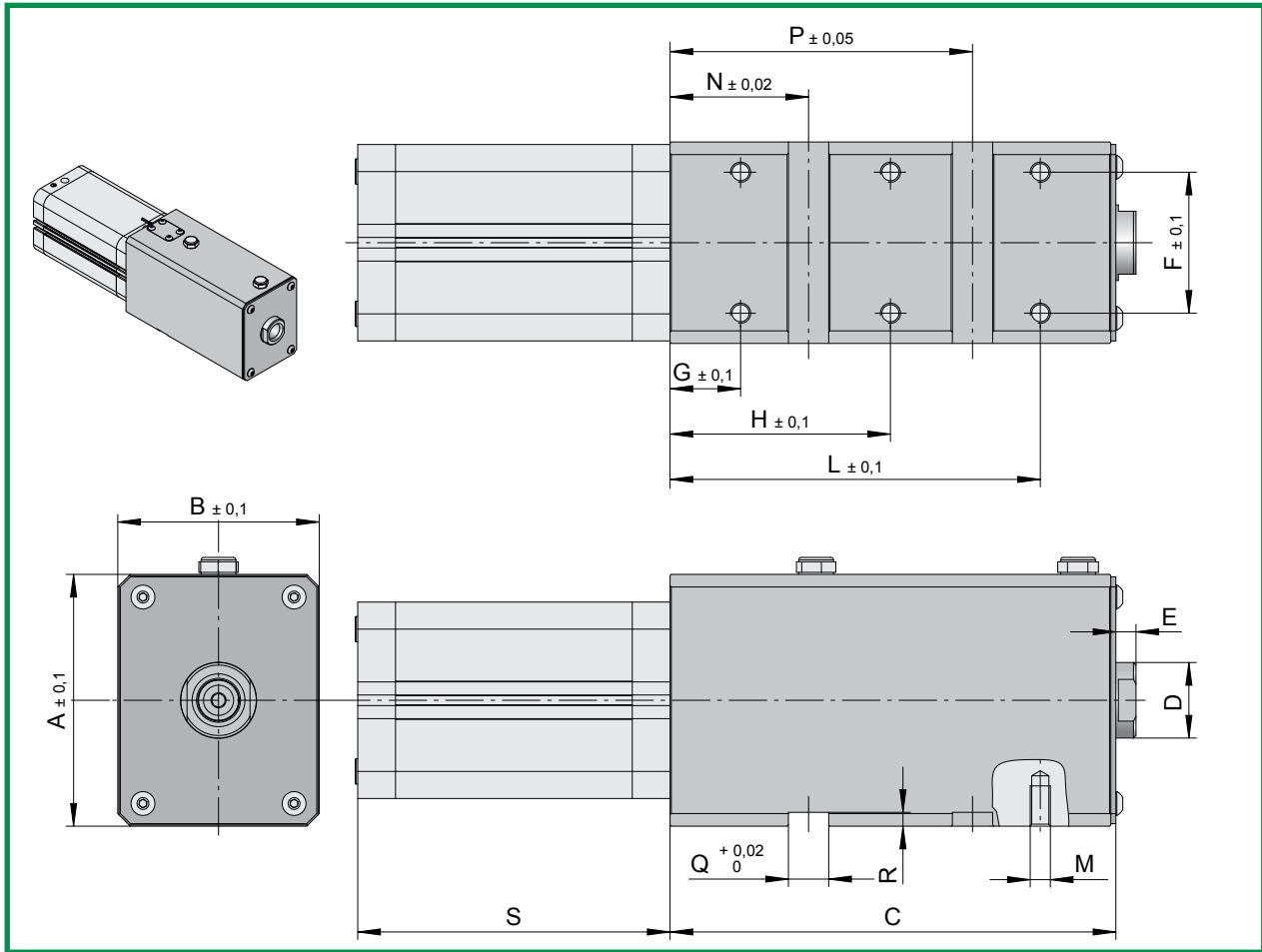


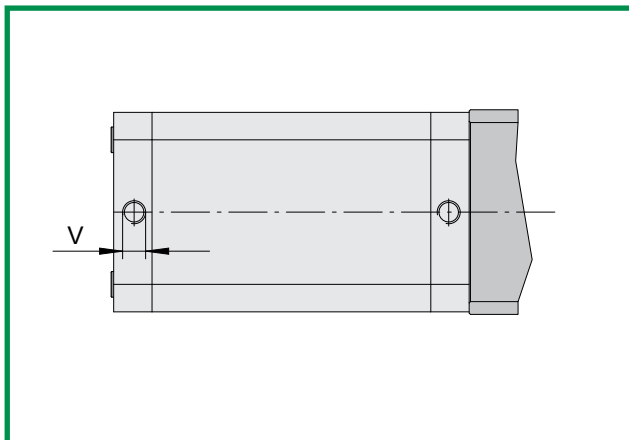
ERMANNNO BALZI



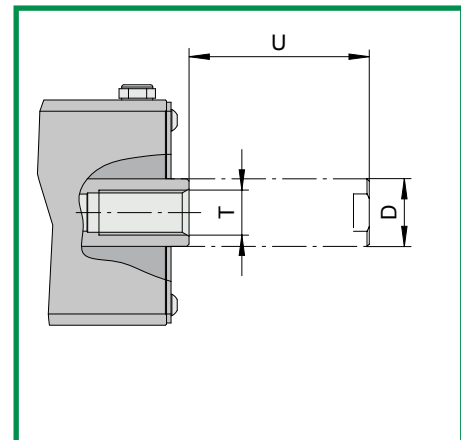
**SELF LOCKING CYLINDER
IN ROD RETRACT POSITION**



CODE	A	B	C	D	E	F	G	H	L	M	N	P	Q	R	S
CAP166380	100	80	177	30	8	56	28	87,5	147	M8	55	114,5	16	5,5	139
CAP166390	100	80	187	30	8	56	28	87,5	147	M8	55	114,5	16	5,5	149



CODE	V
CAP166380	1/8"
CAP166390	1/8"

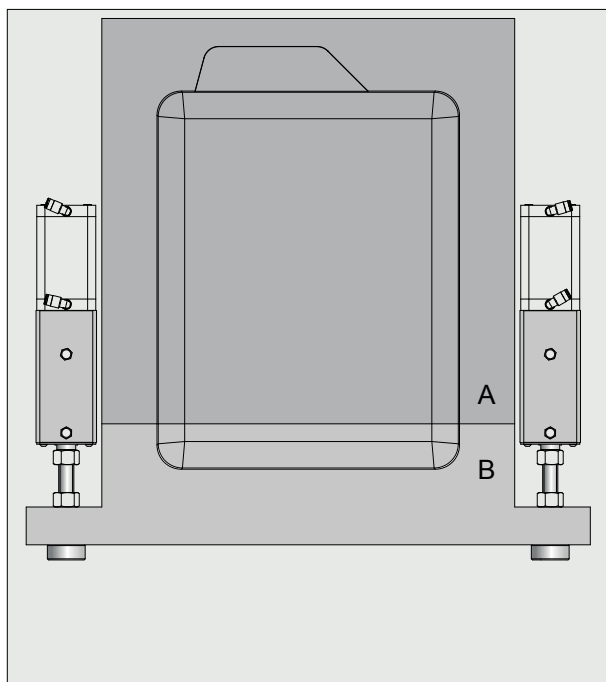


CODE	T	U	D
CAP166380	M20	80	30
CAP166390	M20	90	30

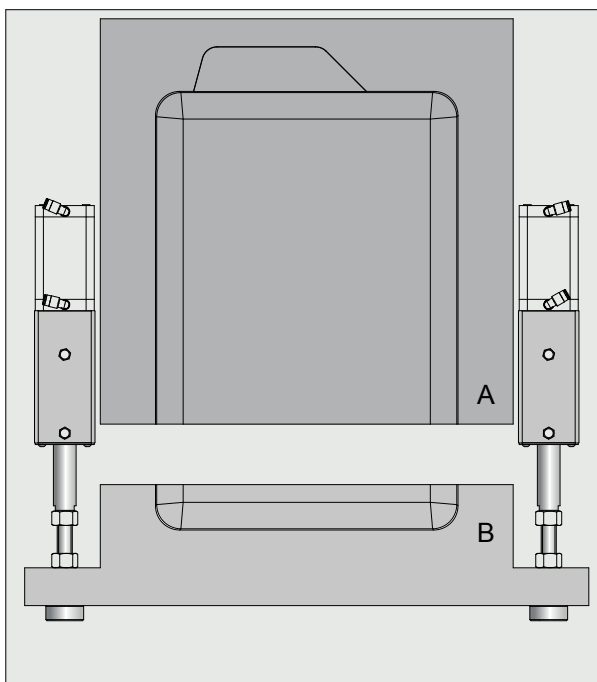
CHARACTERISTICS

1. MECHANICAL LOCKING IN ROD RETRACT POSITION;
2. HOLDING FORCE: 1300 KG WITH A DEVIATION OF 0,05 MM;
3. PNEUMATIC CYLINDER BORE DIAMETER: 63 MM;
4. INDUCTIVE SENSOR TO DETECT THE INSERTION OF THE MECHANICAL LOCK;
5. MAXIMUM WORKING PRESSURE: 10 BAR

APPLICATION EXAMPLE



LOCKING POSITION

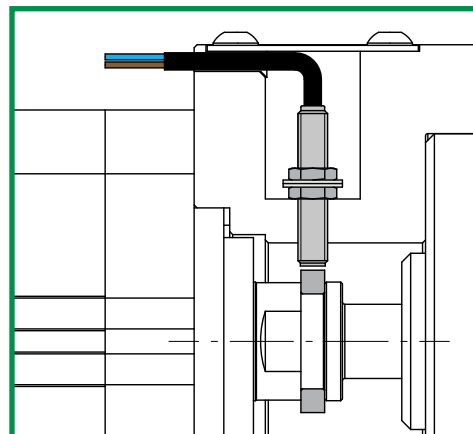
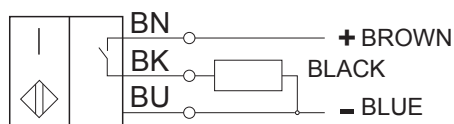
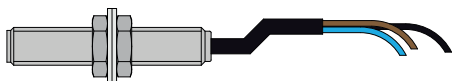


OPEN POSITION

1. The pneumatic circuit has to be balanced between the two CAP to guarantee a good functioning;
2. When the system is in locking position there has to be a gap of 0,01 / 0,02 mm between the plates A and B.

INDUCTIVE SENSOR FOR LOCKING VERIFICATION

The inductive sensor detects the insertion of the mechanical lock.





ERMANNNO BALZI

Viale Enrico Mattei, 13
25080 Mazzano (Brescia)
Tel: +39 0302120868
E-mail: info@ermannnobalzi.com