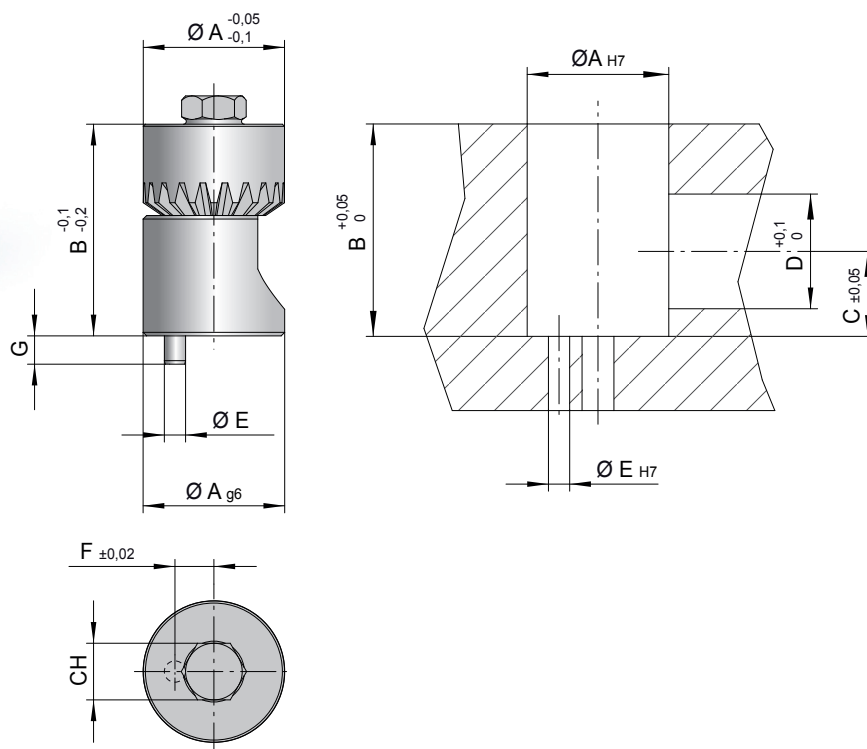


Mold insert removal



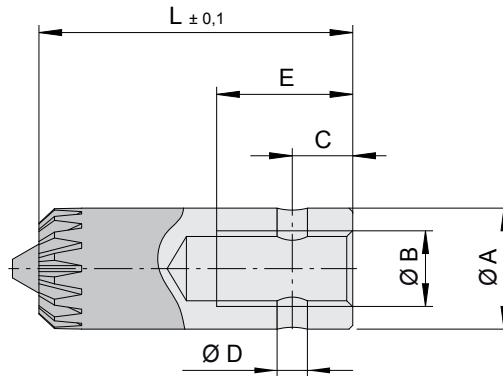
CODE	CH	A	B	C	D	E	F	G
EI-203	3	20	30	12	16,2	3	5,5	4
EI-204	4							
EI-205	5							
EI-206	6							
EI-208	8							

Mat.: 1.7225. Hardness: 800 N/mm² (21,7 HRC)
Nitrided depth 0,1mm

CHARACTERISTICS

- 1) LIMITED SIZE;
- 2) STURDY SYSTEM SUITABLE EVEN FOR MEDIUM TORQUE FORCE;
- 3) EASY TO INSTALL.

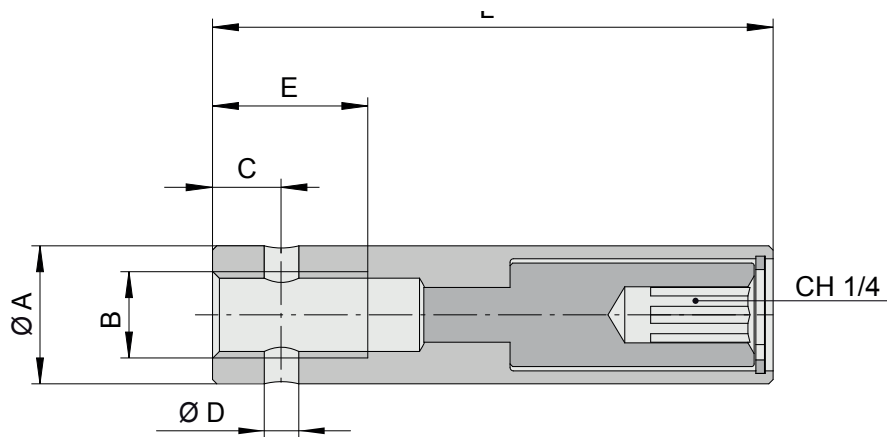
Key for mold insert removal



CODE	A	B	C	D	E	L
EI-20CE	16	M10	8	4	19	41,5

Mat.: 1.7225. Hardness: 800 N/mm² (21,7 HRC)
Nitrided depth 0,1mm

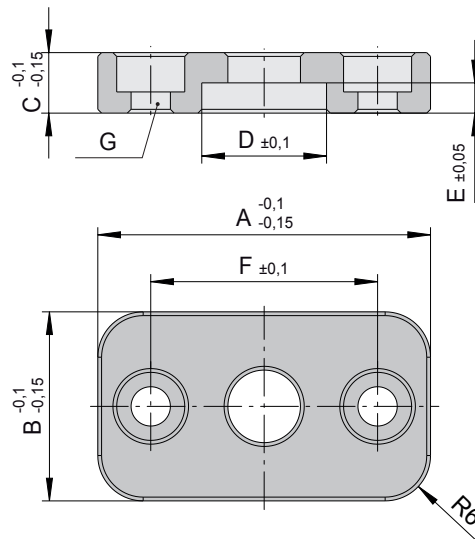
Extension of key for mold insert removal



COD.	A	B	C	D	E	L
EI-20CD	16	M10	8	4	19	65

Mat.: 7225. Hardness: 800 N/mm² (21,7 HRC)
Nitrided depth 0,1mm
Torque force 5,5 Nm

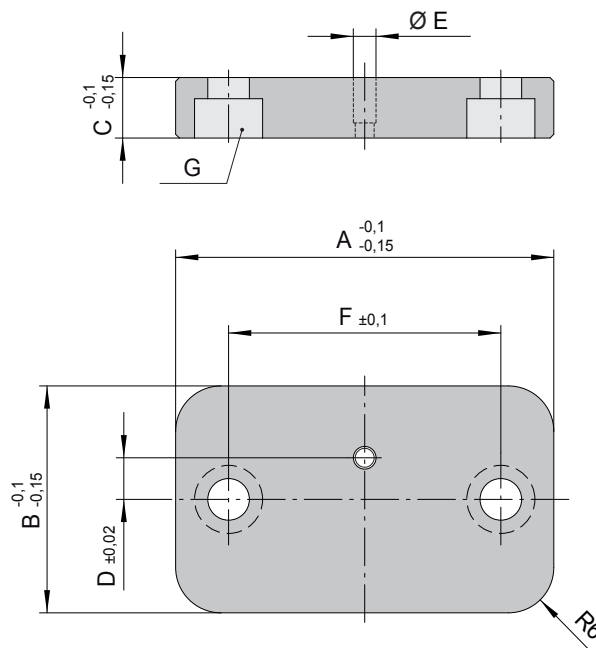
Fixing plate for mold insert removal



CODE	A	B	C	D	E	F	G
EI-20PCD	44	25	8	16,5	4	30	M5

Mat.: 1.1730 Carbon steel. Hardness: 540 HRV
Nitrided depth 0,3mm

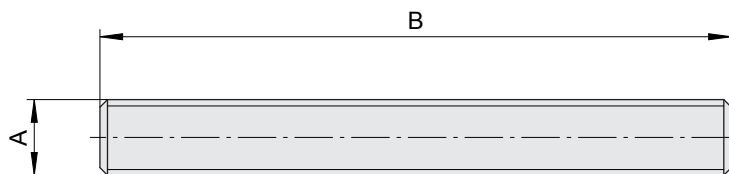
Fixing plate for mold insert removal



CODE	A	B	C	D	E	F	G
EI-20PI	44	25	8	5,5	3	30	M5

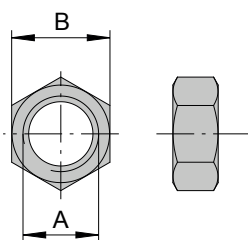
Mat.: 1.1730 Carbon steel. Hardness: 540 HRV
Nitrided depth 0,3mm

Threaded rod



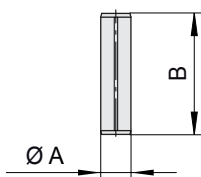
CODE	A	B
EI-M10PF	M10	300

Fastening nut



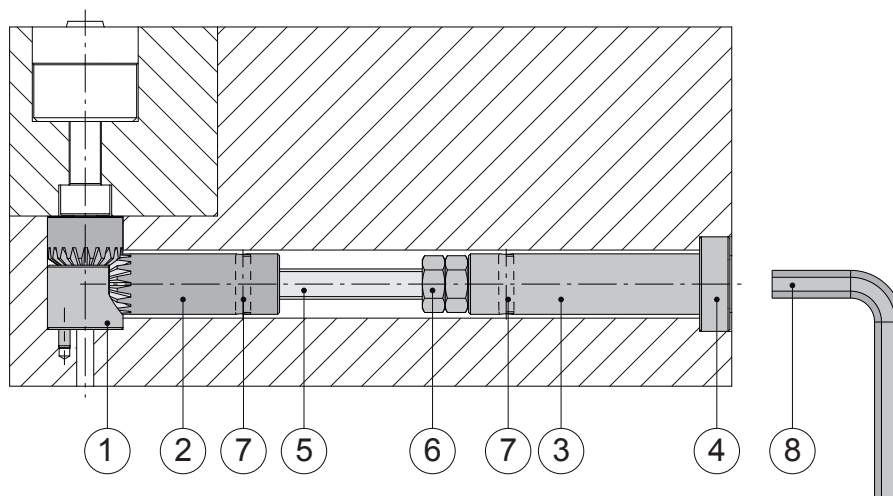
CODE	A	B
EI-M10D	M10	CH13

Spring pin



CODE	A	B
EI-SE4	4	16

Mold insert removal kit

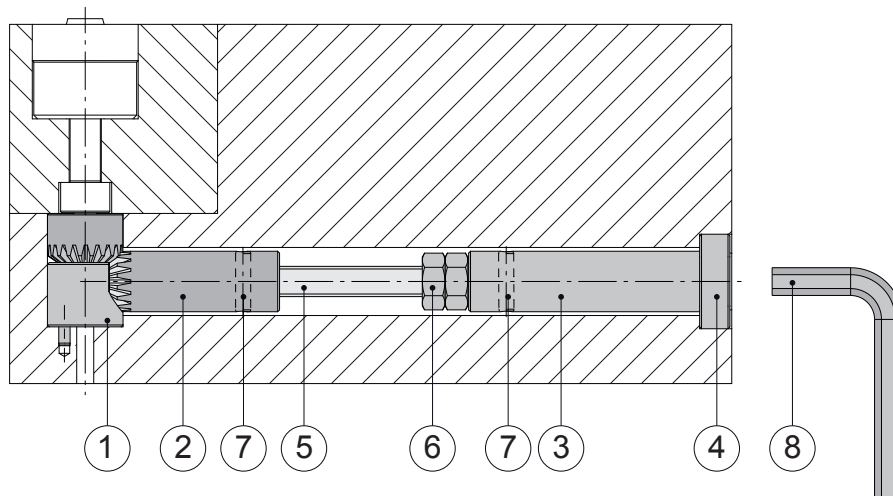


CODE KIT	CODE	POS.	Q.TY	COMPONENTS
EI-203K	EI-203	1	1	MOLD INSERT REMOVAL CH3
	EI-20CE	2	1	KEY FOR MOLD INSERT REMOVAL
	EI-20CD	3	1	EXTENSION OF KEY 5,5Nm
	EI-20PCD	4	1	FIXING PLATE
	EI-M10PF	5	1	THREADED ROD M10
	EI-M10D	6	2	FASTENING NUT M10
	EI-SE4	7	2	SPRING PIN Ø4
	EI-1/4C	8	1	EXAGONAL KEY 1/4

CODE KIT	CODE	POS.	Q.TY	COMPONENTS
EI-204K	EI-204	1	1	MOLD INSERT REMOVAL CH4
	EI-20CE	2	1	KEY FOR MOLD INSERT REMOVAL
	EI-20CD	3	1	EXTENSION OF KEY 5,5Nm
	EI-20PCD	4	1	FIXING PLATE
	EI-M10PF	5	1	THREADED ROD M10
	EI-M10D	6	2	FASTENING NUT M10
	EI-SE4	7	2	SPRING PIN Ø4
	EI-1/4C	8	1	EXAGONAL KEY 1/4

CODE KIT	CODE	POS.	Q.TY	COMPONENTS
EI-205K	EI-205	1	1	MOLD INSERT REMOVALCH5
	EI-20CE	2	1	KEY FOR MOLD INSERT REMOVAL
	EI-20CD	3	1	EXTENSION OF KEY 5,5Nm
	EI-20PCD	4	1	FIXING PLATE
	EI-M10PF	5	1	THREADED ROD M10
	EI-M10D	6	2	FASTENING NUT M10
	EI-SE4	7	2	SPRING PIN Ø4
	EI-1/4C	8	1	EXAGONAL KEY 1/4

Mold insert removal kit



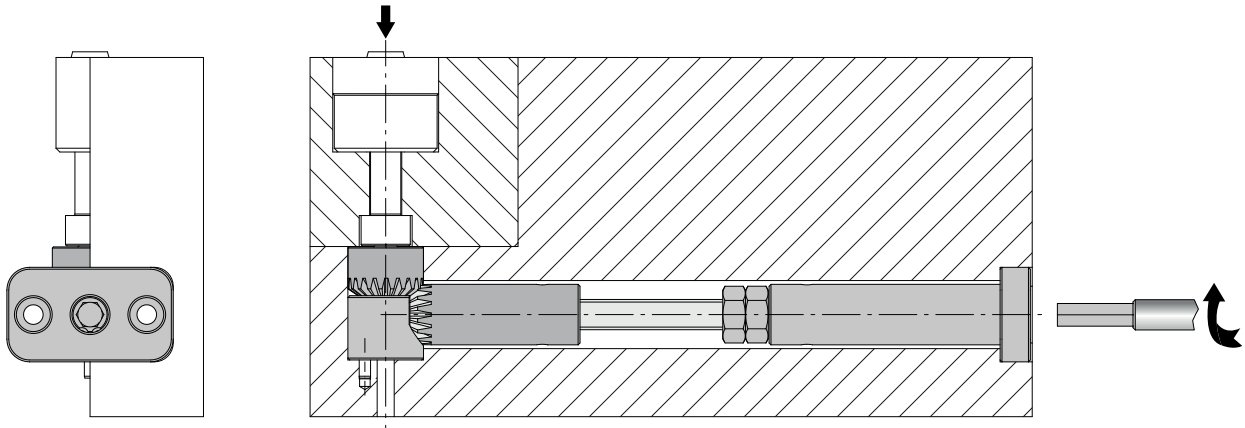
CODE KIT	CODE	POS.	Q.TY	COMPONENTS
EI-206K	EI-206	1	1	MOLD INSERT REMOVAL CH6
	EI-20CE	2	1	KEY FOR MOLD INSERT REMOVAL
	EI-20CD	3	1	EXTENSION OF KEY 5,5Nm
	EI-20PCD	4	1	FIXING PLATE
	EI-M10PF	5	1	THREADED ROD M10
	EI-M10D	6	2	FASTENING NUT M10
	EI-SE4	7	2	SPRING PIN Ø4
	EI-1/4C	8	1	EXAGONAL KEY 1/4

CODE KIT	CODE	POS.	Q.TY	COMPONENTS
EI-208K	EI-208	1	1	MOLD INSERT REMOVAL CH8
	EI-20CE	2	1	KEY FOR MOLD INSERT REMOVAL
	EI-20CD	3	1	EXTENSION OF KEY 5,5Nm
	EI-20PCD	4	1	FIXING PLATE
	EI-M10PF	5	1	THREADED ROD M10
	EI-M10D	6	2	FASTENING NUT M10
	EI-SE4	7	2	SPRING PIN Ø4
	EI-1/4C	8	1	EXAGONAL KEY 1/4

Technical notes

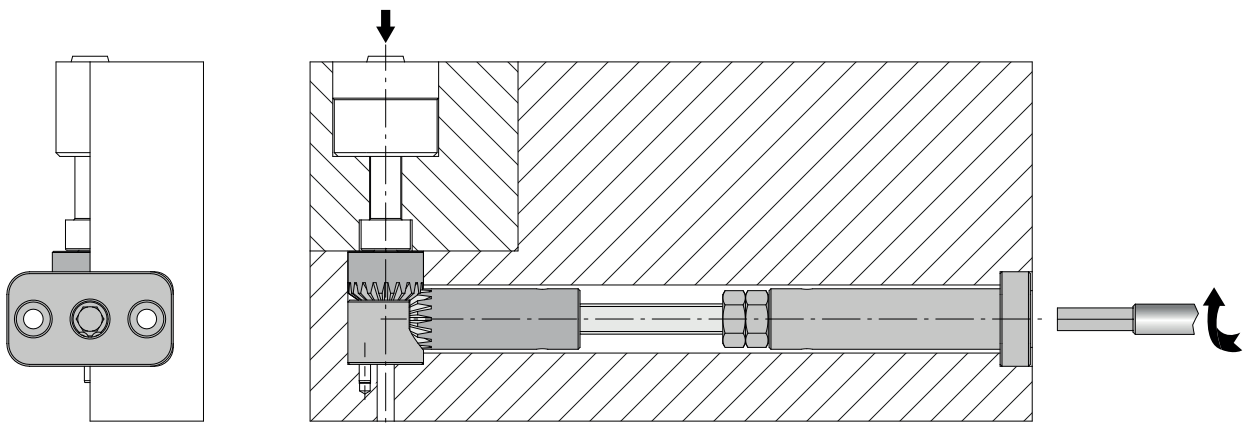
FIXING PHASE

- To fix the insert, simply insert a 1/4-inch hex key and turn it clockwise until the torque wrench clicks.



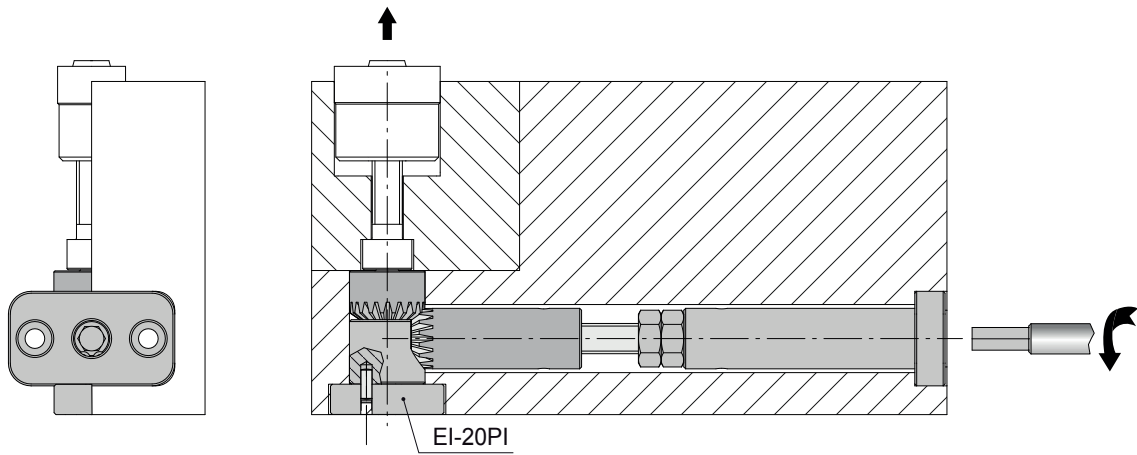
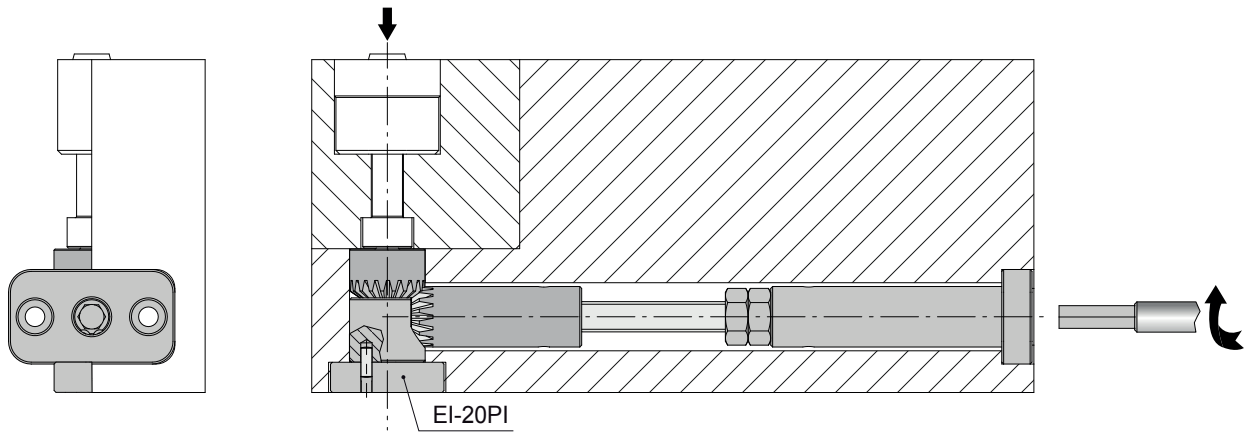
EJECTION PHASE

- To remove the insert, simply insert a 1/4-inch hex key and turn it counterclockwise



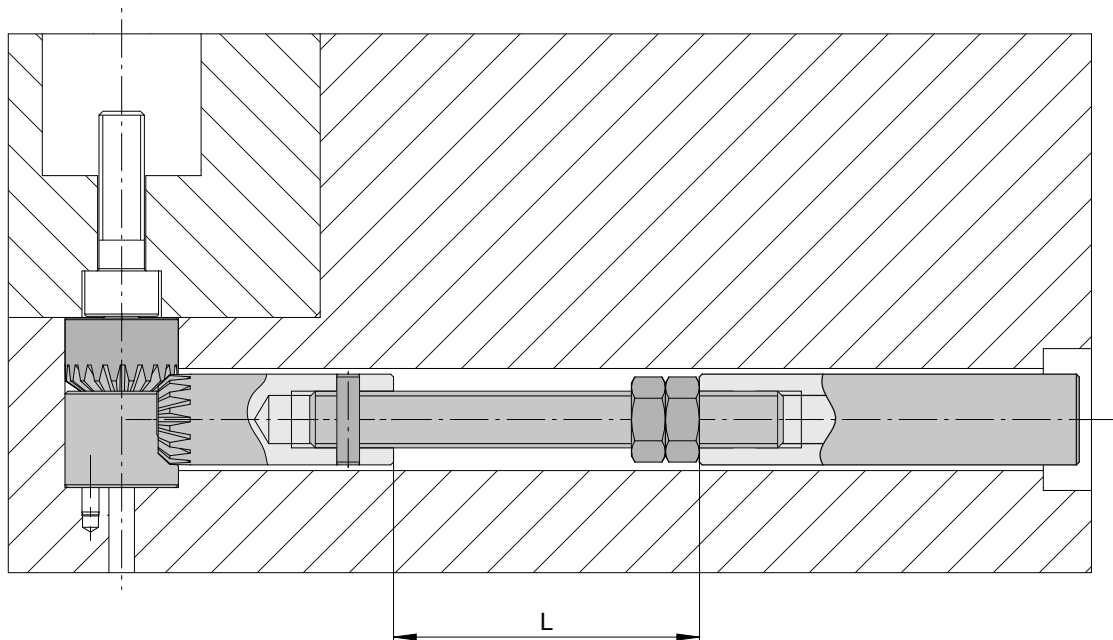
Technical notes

- In case of through-hole mounting, you can use the dedicated plate EI-20PI



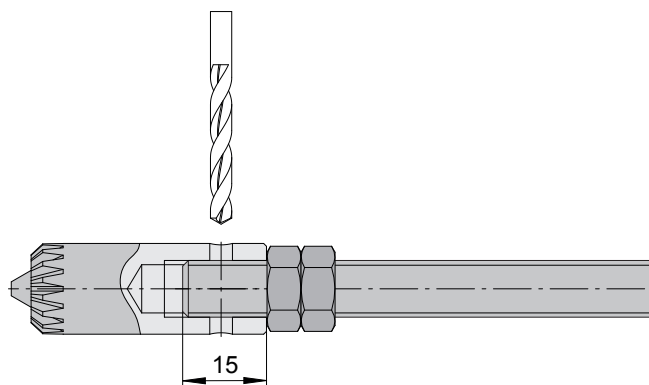
Threaded rod adjustment

- 1) Cut the threaded rod to a length of $L+30\text{mm}$.

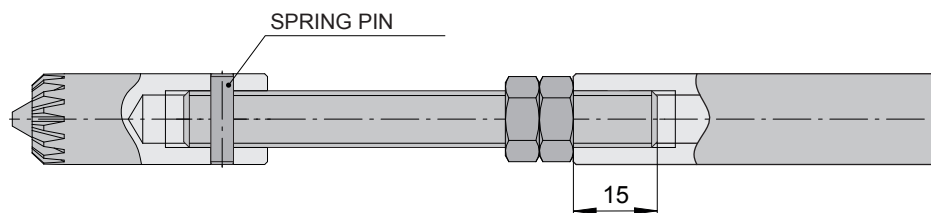


- 2) Position the EI-M10D nut and locknut about 15mm from the end of the threaded rod, then screw the EI-20C body until it locks in place.

- 3) Drill a $\varnothing 4$ hole and insert the EI-SE4 spring pin.



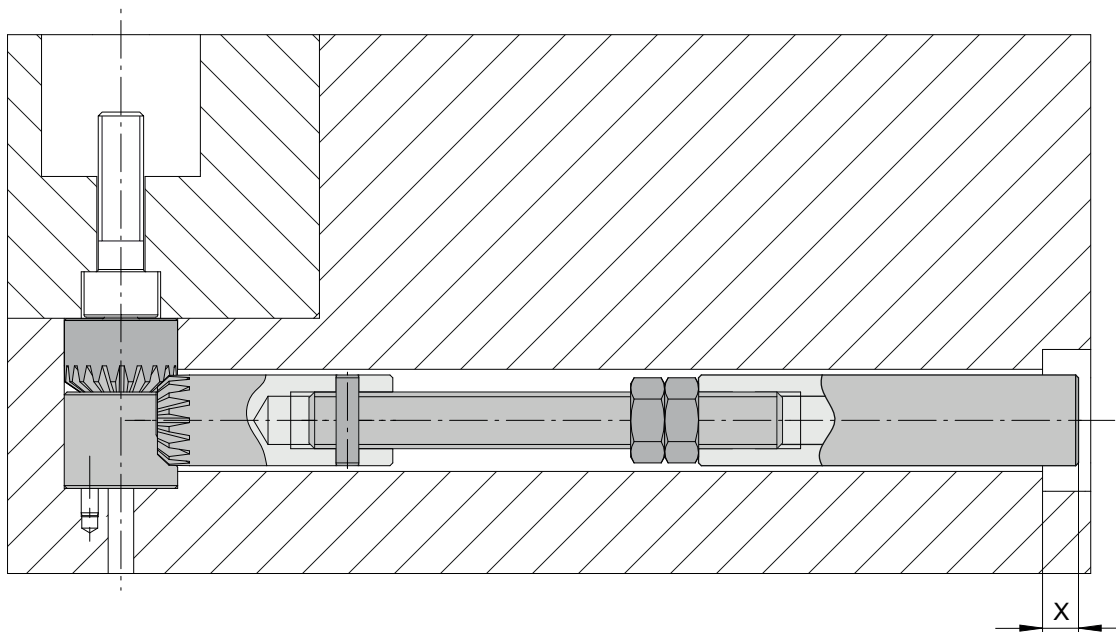
- 4) Position the EI-M10D nut and locknut about 15mm from the end of the threaded rod and tighten the EI-20CD torque wrench until it locks.



Threaded rod adjustment

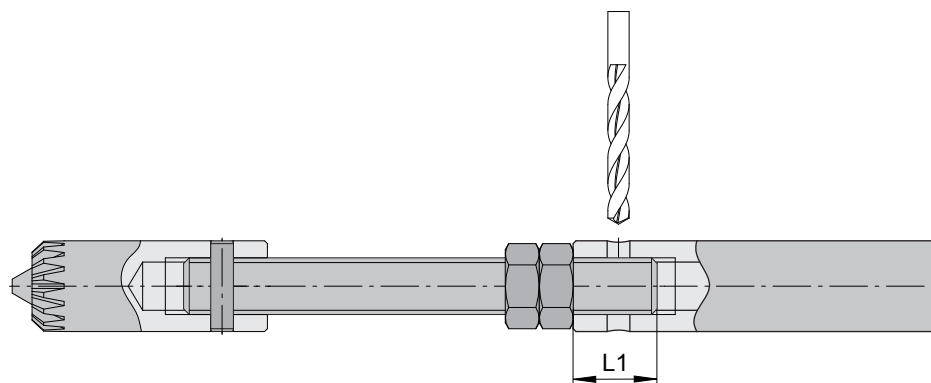
5) Insert the assembly into the housing and measure dimension X.

6) Adjust the position of the nut and locknut so that dimension X measures 3.9mm 0/-0,5.



7) After adjusting dimension X, drill a $\varnothing 4$ hole and insert the EI-SE4 spring pin.

Attention: after adjustment, L1 min=12mm



8) Complete the assembly by securing the EI20PI plate.

