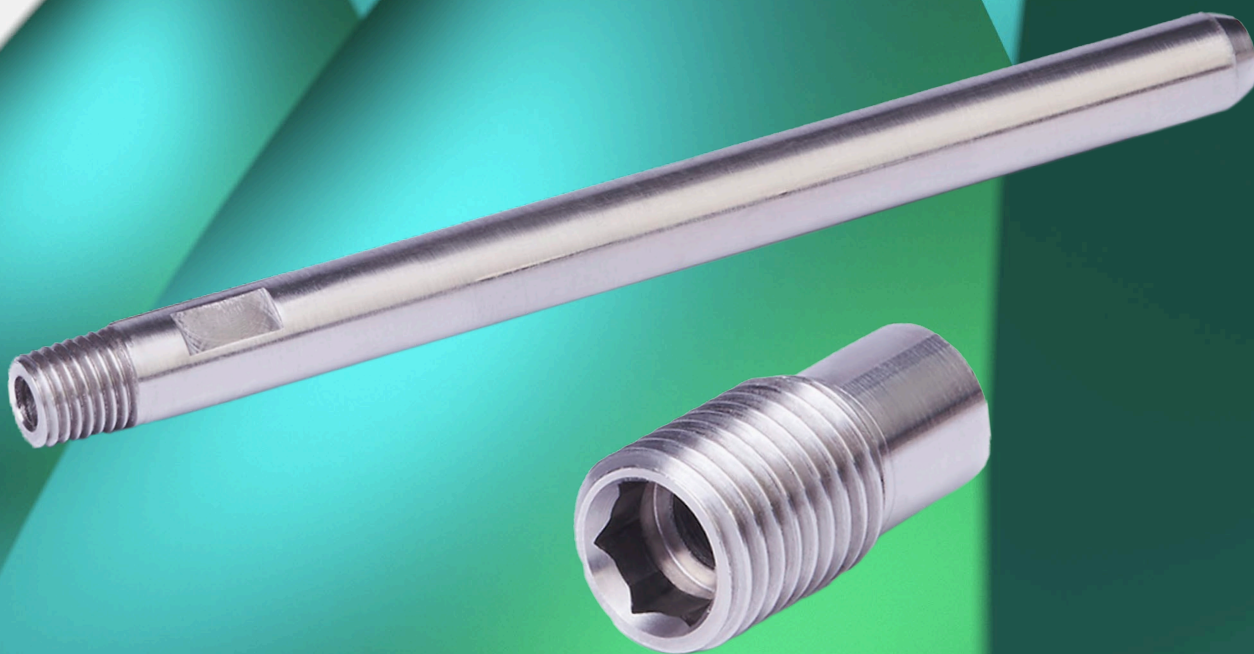


# ERMANN BALZI

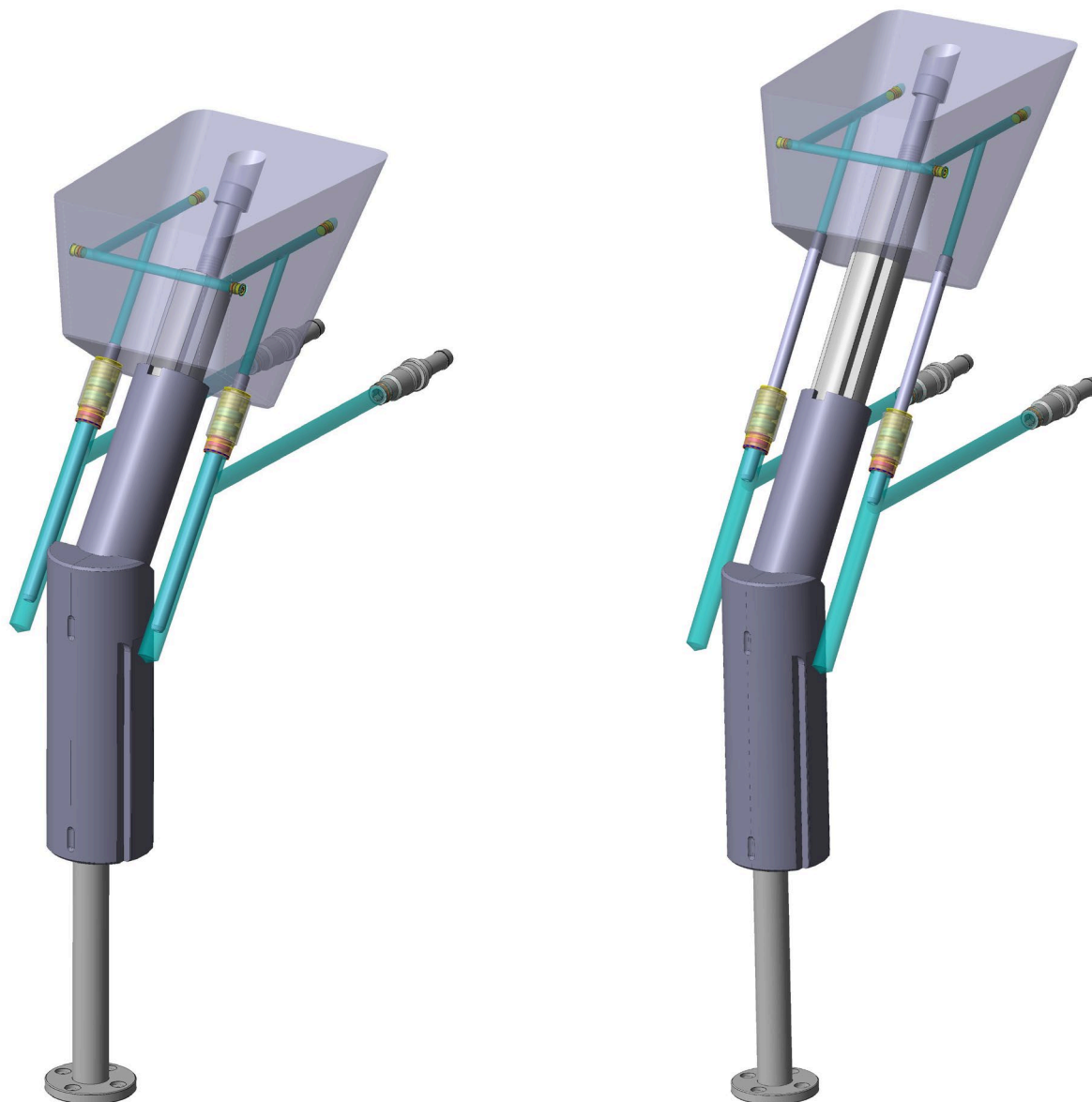
MOULD PARTS AND COMPONENTS



## LifterCooler

Advanced mold cooling

# LifterCooler



**Molding position**

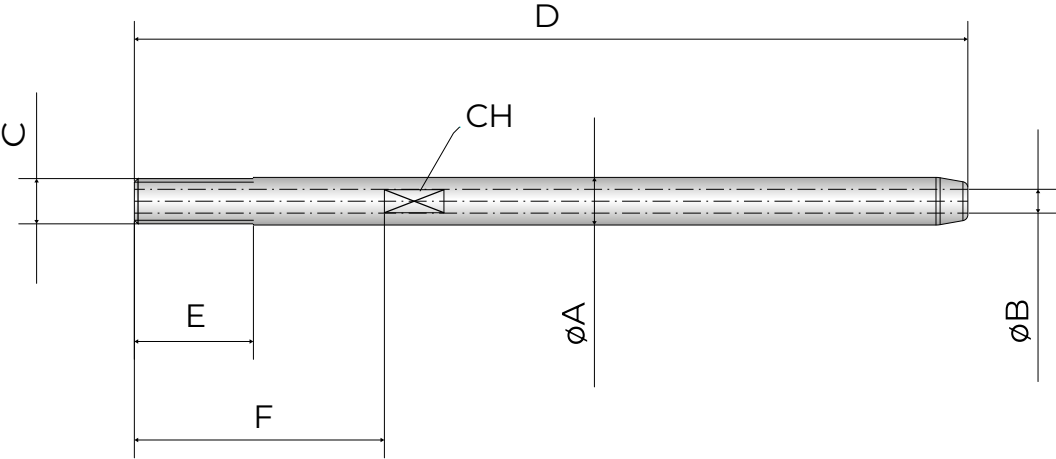
**Ejection position**

The **LifterCooler** system provides a simple and effective solution for cooling lifters in molds. Thanks to dedicated seals for axial movements, the cooling circuit of the lifter head can be fed directly through holes in the cavity plate, eliminating the need for flexible hoses and complex machining on the mold.

**Characteristics:**

1. Compact dimensions
2. Ease of assembly
3. Inlet and outlet holes in the cavity PLATE

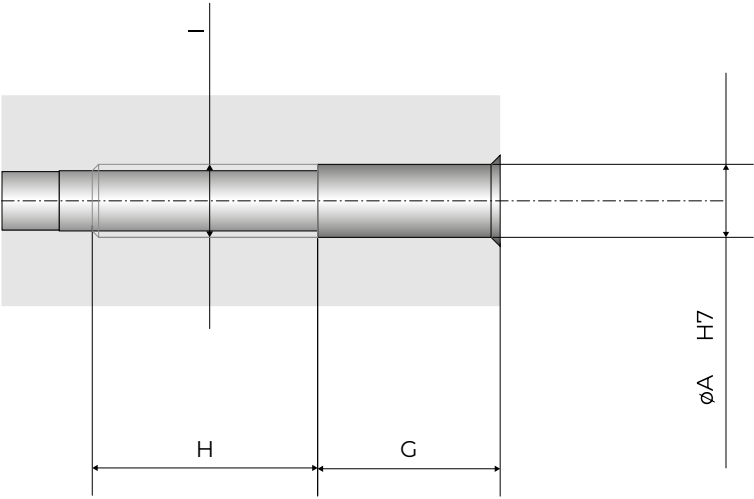
# Lifter Cooler Pipe



CODE	øA	øB	C	D	E	F	CH
LC-04P200	4	2	M4	200	10	21	3,5
LC-04P300	4	2	M4	300	10	21	3,5
LC-10P200	10	6	R 1/8	200	10	21	9
LC-10P300	10	6	R 1/8	300	10	21	9
LC-14P200	14	9	R 1/4	200	14	24,5	13
LC-14P300	14	9	R 1/4	300	14	24,5	13

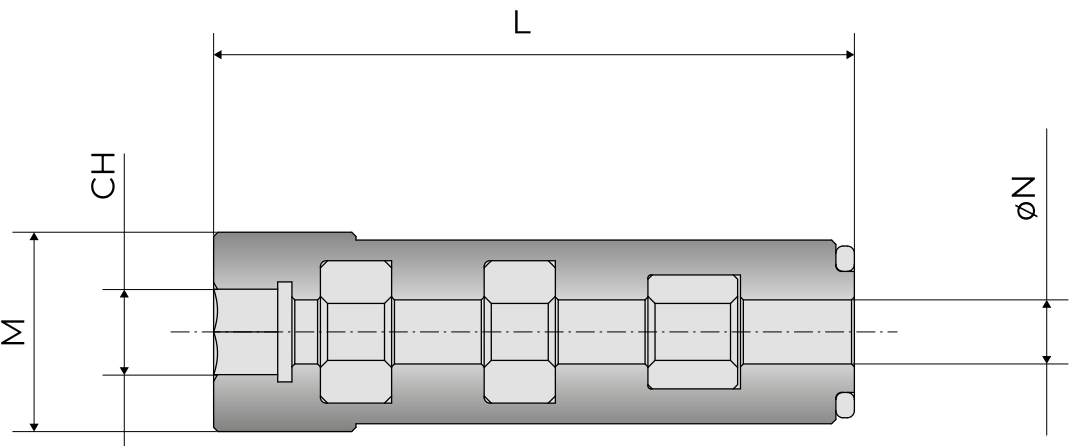
## Seat Dimensions

CODE	øA	G	H	I
LC-04P200	4	10	13	M4
LC-04P300	4	10	13	M4
LC-10P200	10	10	13	R 1/8
LC-10P300	10	10	13	R 1/8
LC-14P200	14	10	17	R 1/4
LC-14P300	14	10	17	R 1/4



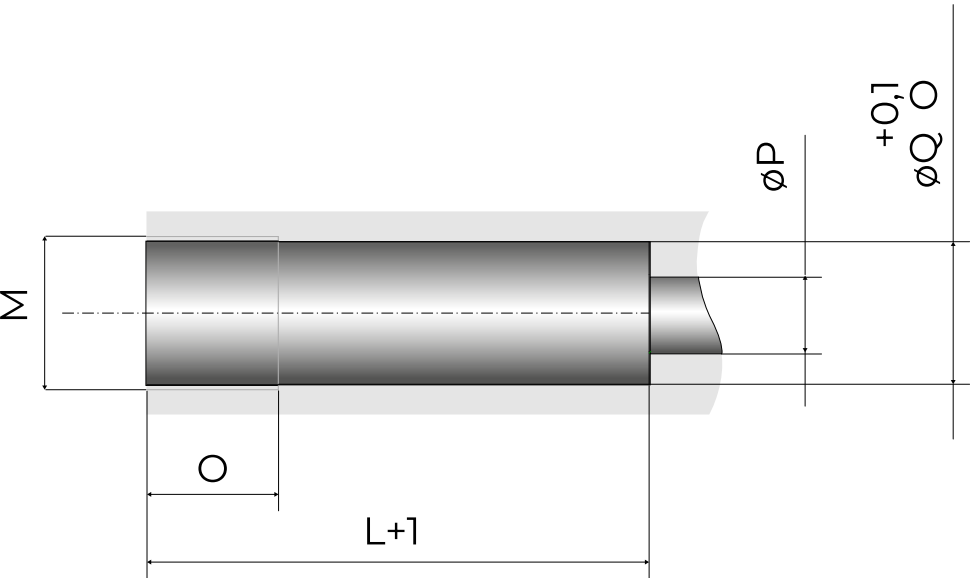
# Lifter Cooler Sealing Unit

CODE	M	L	ØN	CH
LC-04SU	M14X1	45	4,5	6
LC-10SU	M20X1	45	10,5	12
LC-14SU	M24X1	45	14,5	16

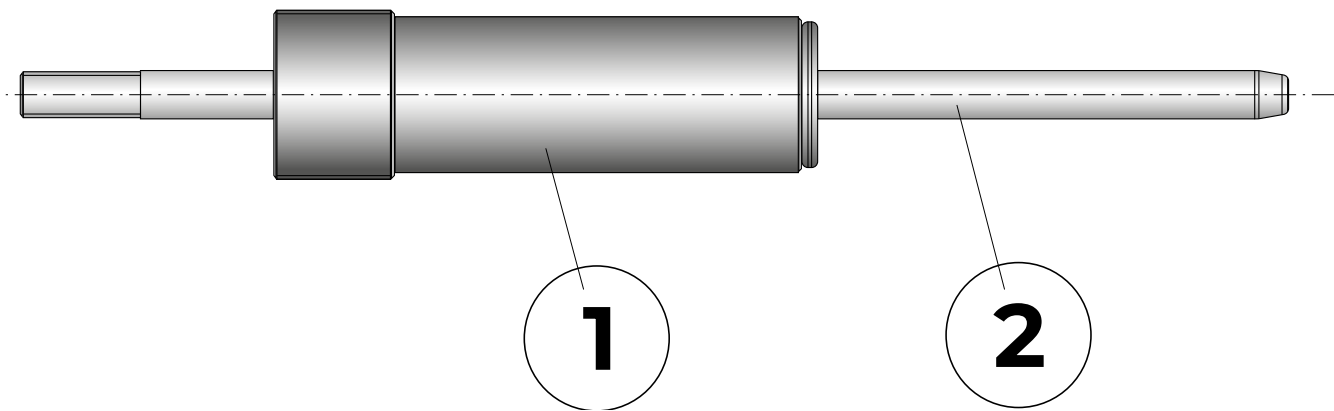


## Seat Dimensions

CODE	M	L+1	O	ØP	ØQ
LC-04SU	M14X1	46	13	7	13
LC-10SU	M20X1	46	20	13	19
LC-14SU	M24X1	46	20	17	23

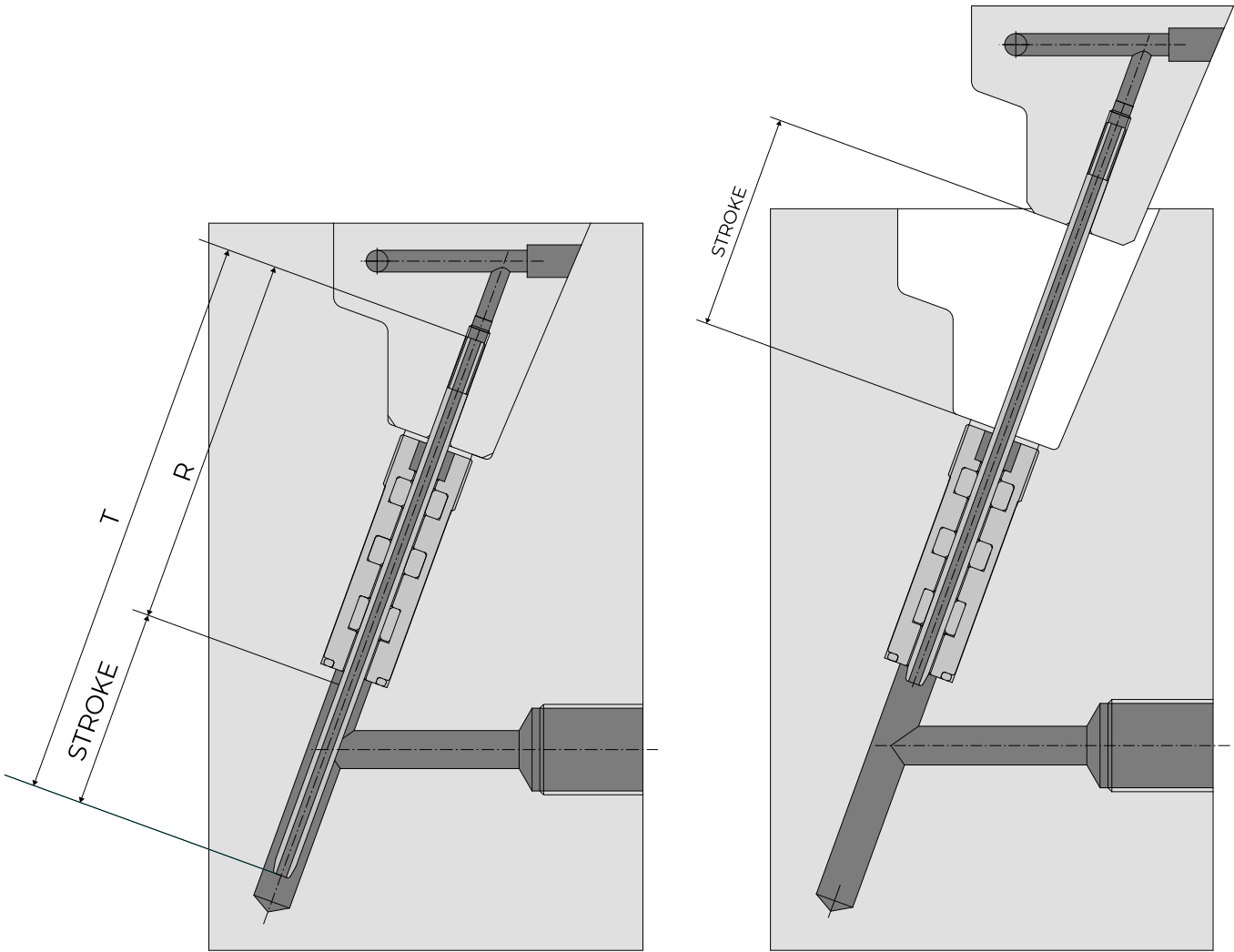


# Lifter Cooler Kit



KIT CODE	COMPONENT CODE	QUANTITY	POS.
LC-04200	LC-04SU	2	1
	LC-04P200	2	2
LC-04300	LC-04SU	2	1
	LC-04P300	2	2
LC-10200	LC-10SU	2	1
	LC-10P200	2	2
LC-10300	LC-10SU	2	1
	LC-10P300	2	2
LC-14200	LC-14SU	2	1
	LC-14P200	2	2
LC-14300	LC-14SU	2	1
	LC-14P300	2	2

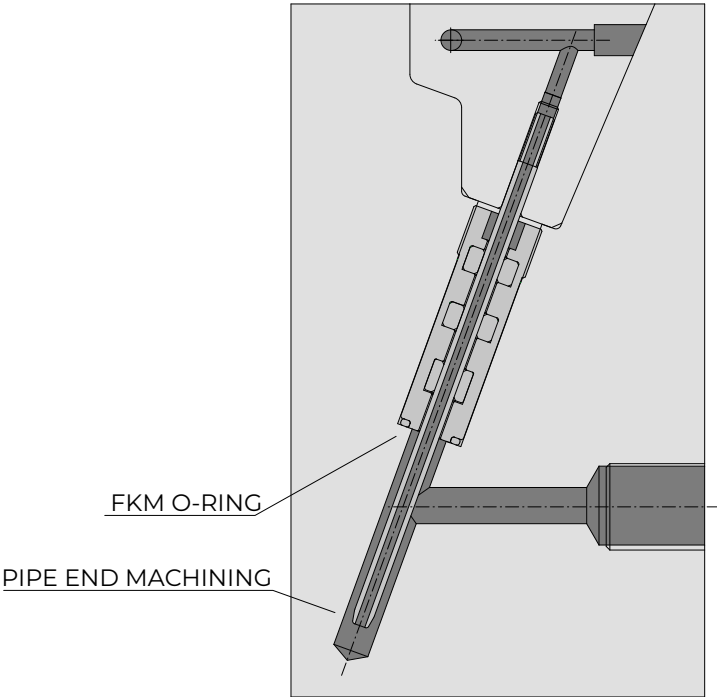
# Technical Notes



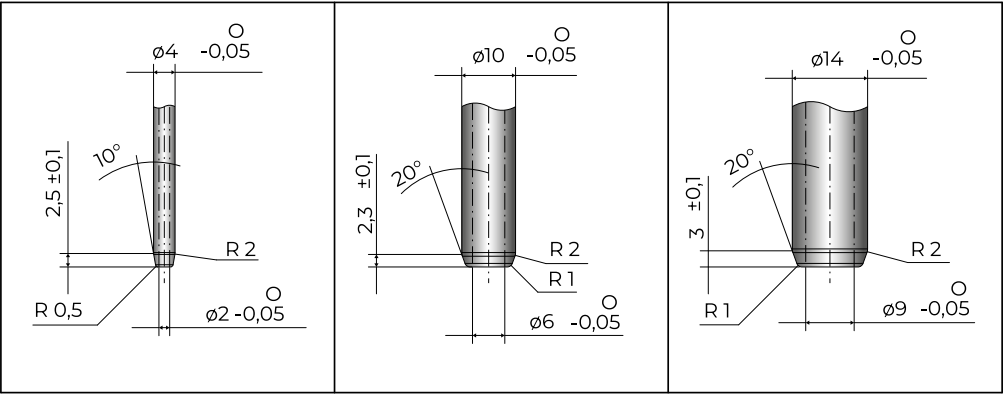
The LC-...P... lifter pipe must be cut to the correct length, depending on the stroke generated by the lifter. In practice, the tube length T is calculated as:  $T = R + \text{stroke}$ .

CODE	R	T
LC-04P200	68	R + STROKE
LC-04P300	68	R + STROKE
LC-10P200	68	R + STROKE
LC-10P300	68	R + STROKE
LC-14P200	72	R + STROKE
LC-14P300	72	R + STROKE

# Technical Notes



Once the length of the LifterCooler Pipe has been adjusted, the pipe end must be machined according to the drawing below to prevent any potential damage to the seals during mold assembly.



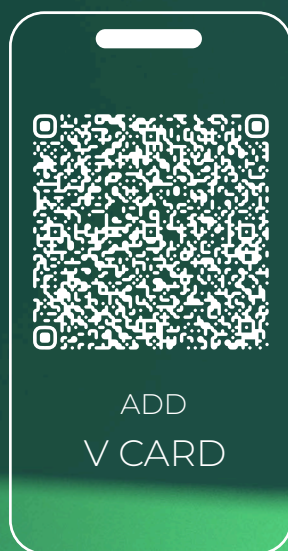
Once the length of the LifterCooler Pipe has been adjusted, the pipe end must be machined according to the drawing below to prevent any potential damage to the seals during mold assembly.

CODE	O-RING
LC-04SU	OR 2037
LC-10SU	OR 2062
LC-14SU	OR 2075



**ERMANNO BALZI**

MOULD PARTS AND COMPONENTS



Viale Enrico Mattei, 13 | 25080 Mazzano (Brescia) | Italy

+39 0302120868 | [info@ermannobalzi.com](mailto:info@ermannobalzi.com)



ADV Agency - [www.crono.guru](http://www.crono.guru)