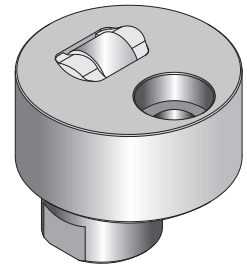
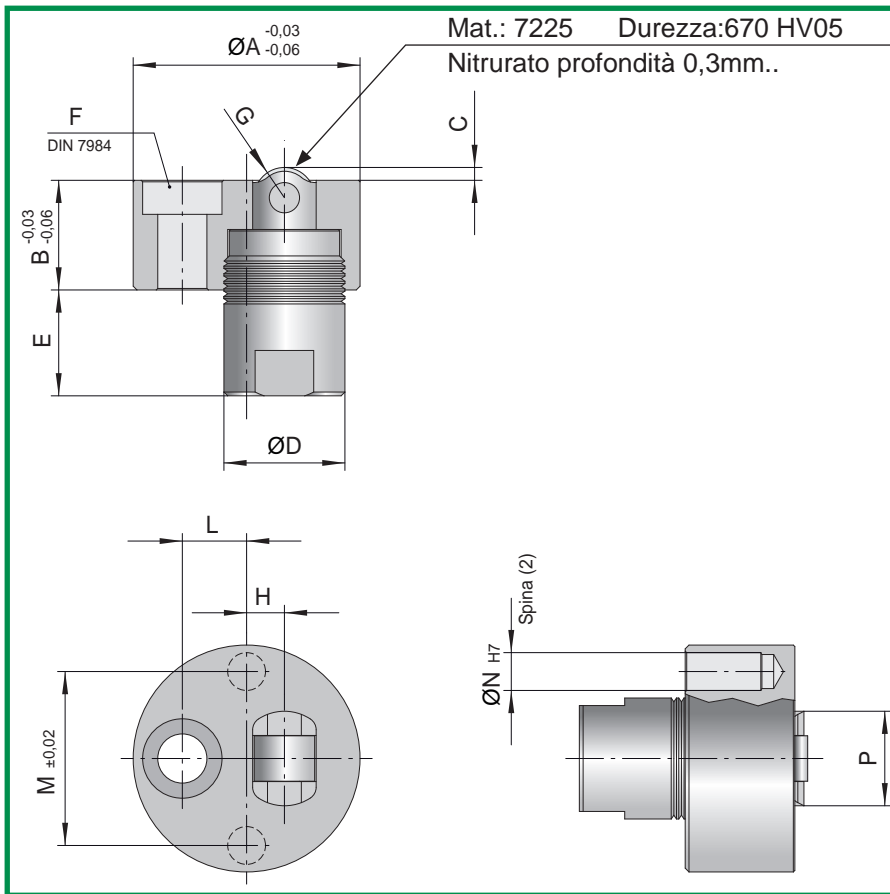


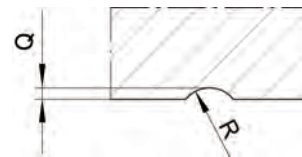
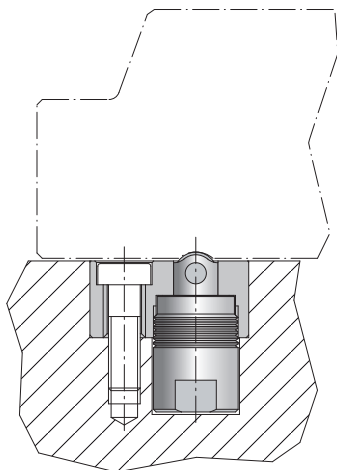
RITENSORE INTEGRATO TONDO



COD.: RIT..

K= PORTATA MAX

COD.	A	B	C	D	E	F	G	H	L	M	N	P	K
RIT10	25	11,5	1	14	14	M5	6	3	7,5	18	4	10,5	10Kg
RIT20	30	14,5	1,5	16	14	M6	8	5	8,5	23	5	12,5	20Kg
RIT50	40	19,5	2	22	18	M8	12	7	11	30	6	18,5	50Kg



COD.	Q	R
RIT10	1	3
RIT20	1,5	4
RIT50	2	6

CARATTERISTICHE

- 1) ELEVATA CAPACITÀ DI CARICO;
- 2) SISTEMA DI BLOCCAGGIO A RULLO CHE MINIMIZZA I FENOMENI DI USURA;
- 3) INGOMBRO RIDOTTO .