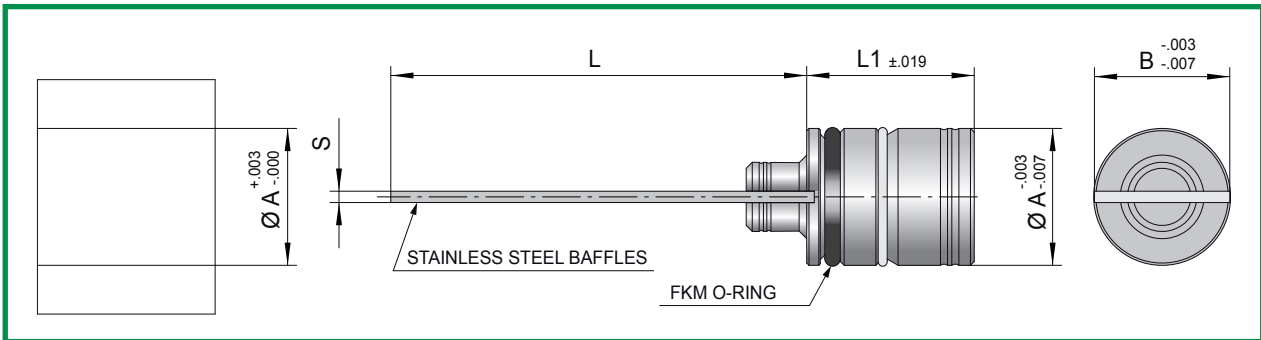
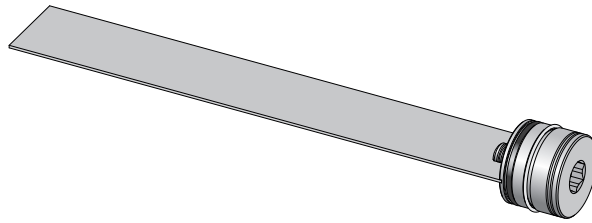


INTERNAL BAFFLES INCHES

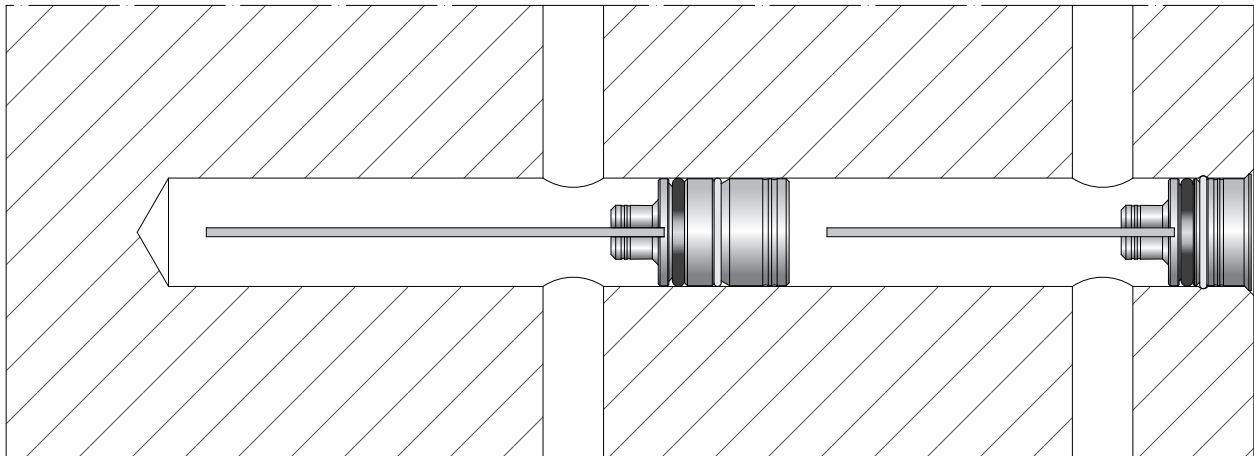
RAPID PLUG AND UNPLUG SYSTEM



CODE: **RLI-..**

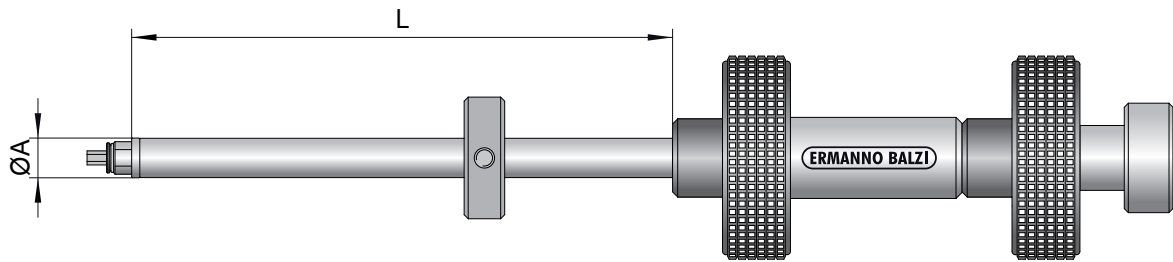
CODE	A	B	S	L1	L				ASSEMBLY DEVICE
RLI-23/32	.718	.718	.039	.870	6	12	18	24	APT-3
RLI-59/64	.921	.921	.039	.860	6	12	18	24	
RLI-1" 5/32	1.156	1.156	.039	.880	6	12	18	24	

Order example: RLI-23/32x6



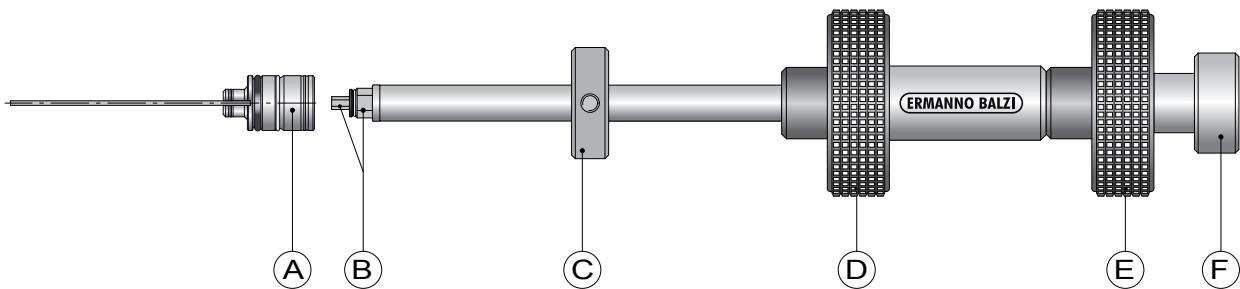
CHARACTERISTICS

- 1) RAPID FITTING AND REMOVING;
- 2) EASY BLADE ORIENTATION;
- 3) SUPPLIED WITH VITON OR WHICH MAY ALSO BE USED AT HIGH TEMPERATURES.



CODE	Ø	L
APT-3	.550	39.370

ON DEMAND THE ROD CAN BE SUPPLIED IN SPECIAL LENGTHS



BAFFLE ASSEMBLY

- 1) Assemble the baffle "A" around two hexagons "B" verifying that it's well inserted.
- 2) Holding the handle "E" tight, screw the handle "F", blocking it with a light pressure.
- 3) Verify that the baffle is hooked to the rod.
- 4) Insert the rod in the hole determining the position with the ring nut "C".
- 5) Holding the handle "E" tight, rotate the handle "D" counter-clockwise until it blocks .
- 6) Verify that the baffle is blocked in the hole, pushing the rod forwards and backwards.
- 7) Holding the handle "E" tight, unscrew the handle "F" (1 or 2 turns are enough).
- 8) Unthread the rod preferably by the handle "D".

BAFFLE DISASSEMBLY

- 1) Insert the rod in the hole and, slightly rotating the handle "D" and "E", practice a light pressure on the baffle until the two hexagons "B" have entered in their seats.
(The operation has happened when the handle "D" and "E" don't rotate anymore)
- 2) Holding the handle "E" tight, screw the handle "F" blocking it with a light pressure and verify that the baffle is hooked, pulling the rod towards outside.
- 3) Holding the handle "E" tight, unblock the handle "D" counter-clockwise.
- 4) Remove APT tool from the bore and unscrew the baffle from APT rod.