

ERMANNNO BALZI

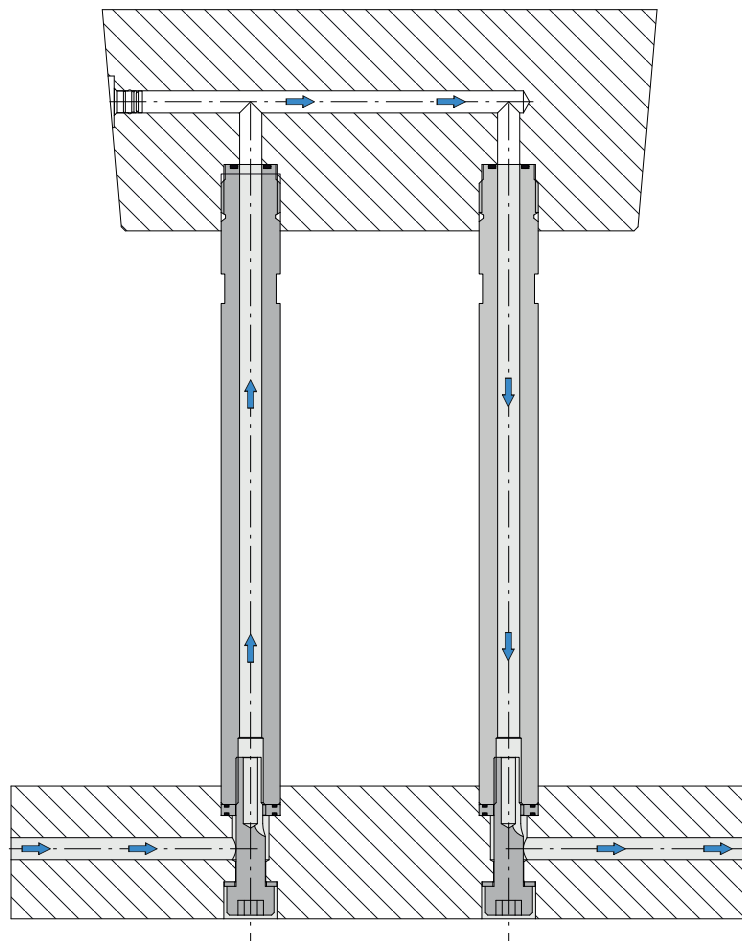
MOULD PARTS AND COMPONENTS

Rod for ejection of cooled inserts

Cooled extraction rod.



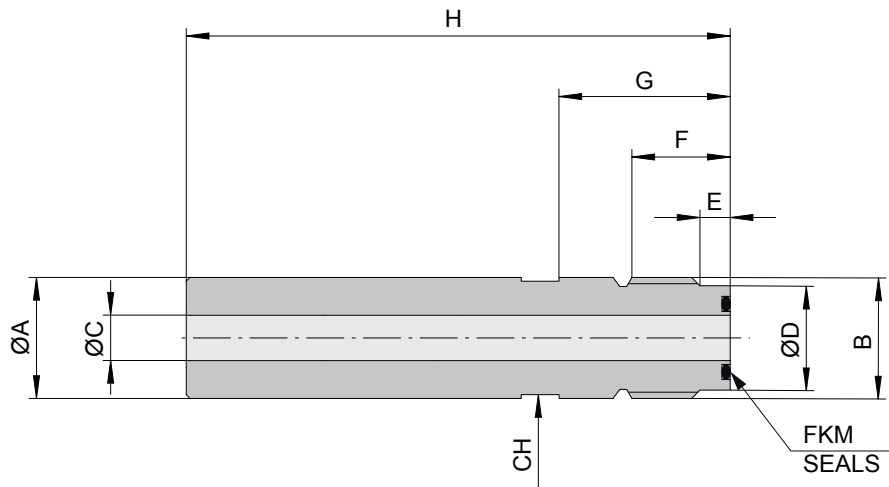
Rod for ejection of cooled inserts



CHARACTERISTICS

- 1) COOLING OF THE INSERT THROUGH THE EXTRACTION RODS;
- 2) EASY OF INSTALLATION;
- 3) ADJUSTABLE LENGTH;
- 4) FKM SEALINGS.

Cooled extraction rod



CODE **S-SER.....**

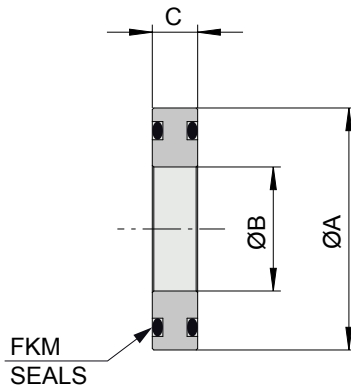
CODE	A	B	C	D	E	F	G	CH	H
S-SER16300	16	M16X1,5	6	13,8	4	13	50	14	300
S-SER16500									500
S-SER20300	20	M20X1,5	8	17,6	4	16	50	18	300
S-SER20500									500
S-SER25300	25	M20X1,5	8	17,6	4	16	50	22	300
S-SER25500									500

Mat.: 1.1213

Hardness: 540 HRV

Hardness: 61-64 HRC depth 1,5-2mm

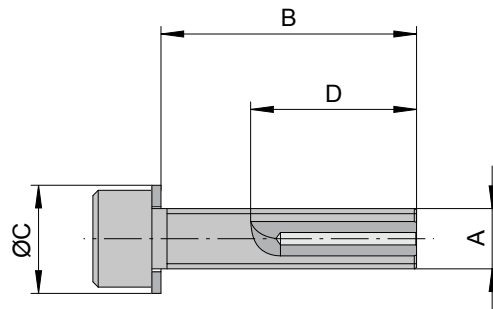
Washer for cooled extraction rod



CODE **R-SER.....**

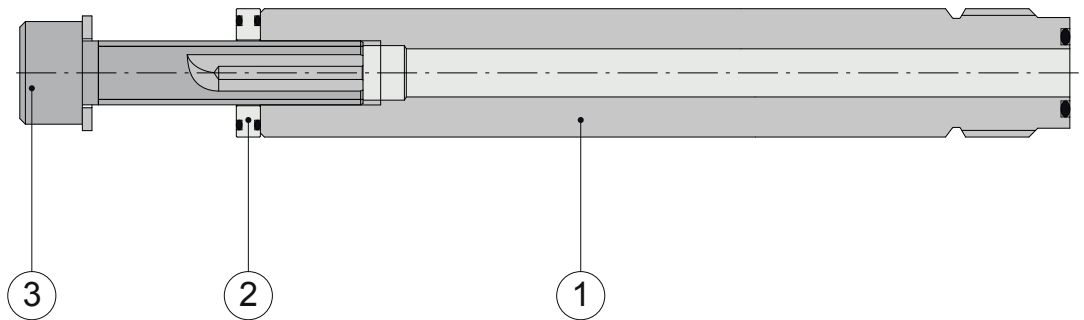
CODE	A	B	C
R-SER16	16	8,2	3
R-SER20	20	10,2	3
R-SER25	25	10,2	3

Shaped screw for cooled extraction rod



CODE	A	B	C	D
V-SERM8	M8	33,8	14,3	22
V-SERM10	M10	33	15,9	23

Cooled extraction rod kit



CODE KIT	CODE	Q.TY	POS.	COMPONENTS
SER16300	S-SER16300	1	1	COOLED ROD Ø16x300
	R-SER16	1	2	WASHER WITH FKM SEALS FOR ROD Ø16
	V-SERM8	1	3	SHAPED M8 SCREW FOR ROD Ø16

CODE KIT	CODE	Q.TY	POS.	COMPONENTS
SER16500	S-SER16500	1	1	COOLED ROD Ø16x500
	R-SER16	1	2	WASHER WITH FKM SEALS FOR ROD Ø16
	V-SERM8	1	3	SHAPED M8 SCREW FOR ROD Ø16

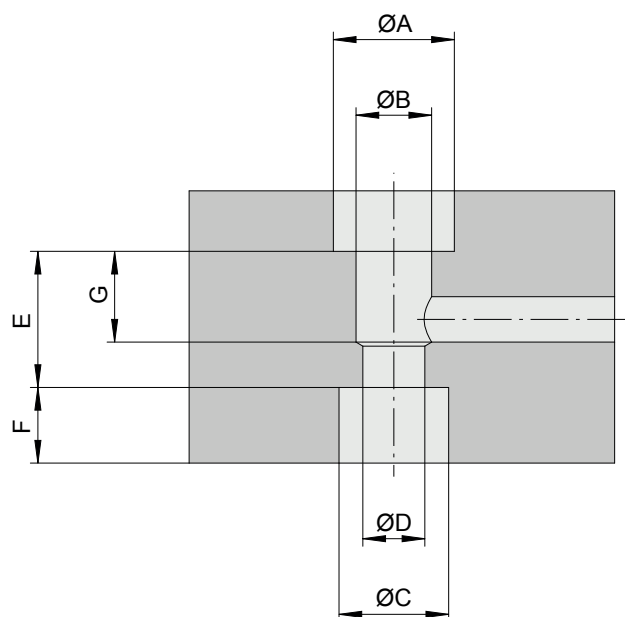
CODE KIT	CODE	Q.TY	POS.	COMPONENTS
SER20300	S-SER20300	1	1	COOLED ROD Ø20x300
	R-SER20	1	2	WASHER WITH FKM SEALS FOR ROD Ø20
	V-SERM10	1	3	SHAPED M10 SCREW FOR ROD Ø20

CODE KIT	CODE	Q.TY	POS.	COMPONENTS
SER20500	S-SER20500	1	1	COOLED ROD Ø20x500
	R-SER20	1	2	WASHER WITH FKM SEALS FOR ROD Ø20
	V-SERM10	1	3	SHAPED M10 SCREW FOR ROD Ø20

CODE KIT	CODE	Q.TY	POS.	COMPONENTS
SER25300	S-SER25300	1	1	COOLED ROD Ø25x300
	R-SER20	1	2	WASHER WITH FKM SEALS FOR ROD Ø25
	V-SERM10	1	3	SHAPED M10 SCREW FOR ROD Ø25

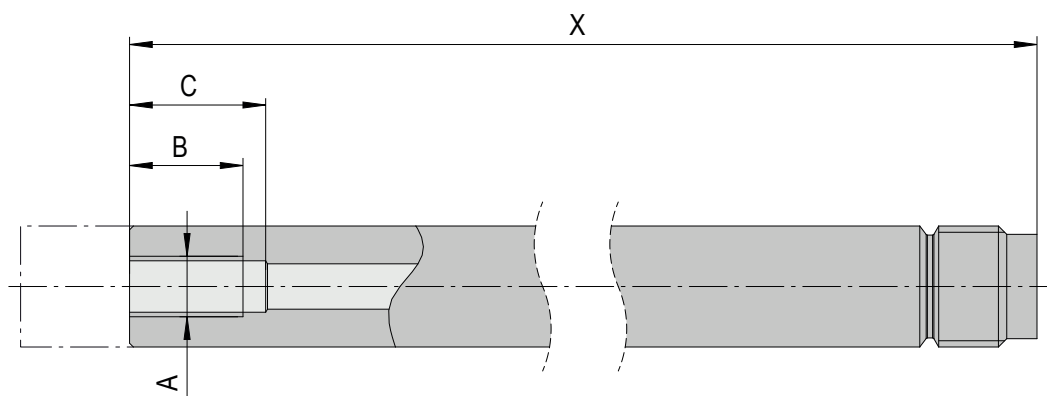
CODE KIT	CODE	Q.TY	POS.	COMPONENTS
SER25500	S-SER25500	1	1	COOLED ROD Ø25x500
	R-SER25	1	2	WASHER WITH FKM SEALS FOR ROD Ø25
	V-SERM10	1	3	SHAPED M10 SCREW FOR ROD Ø25

Technical notes



CODE	A	B	C	D	E	F min.	G
S-SER16300	16	10	15	8,2	18	10	12
S-SER16500							
S-SER20300	20	12	17	10,2	15	13	11
S-SER20500							
S-SER20300	25	12	17	10,2	15	13	11
S-SER20500							

Technical notes



CODE	A	B	C
S-SER16300	M8	15	18
S-SER16500			
S-SER20300	M10	16	20
S-SER20500			
S-SER20300	M10	16	20
S-SER20500			

Preparazione dello stelo S-SER...

- Cut the cooled rod S-SER... to the desired length X.
- Machine on the cooled rod the thread for the shaped screw cod. V-SERM..

