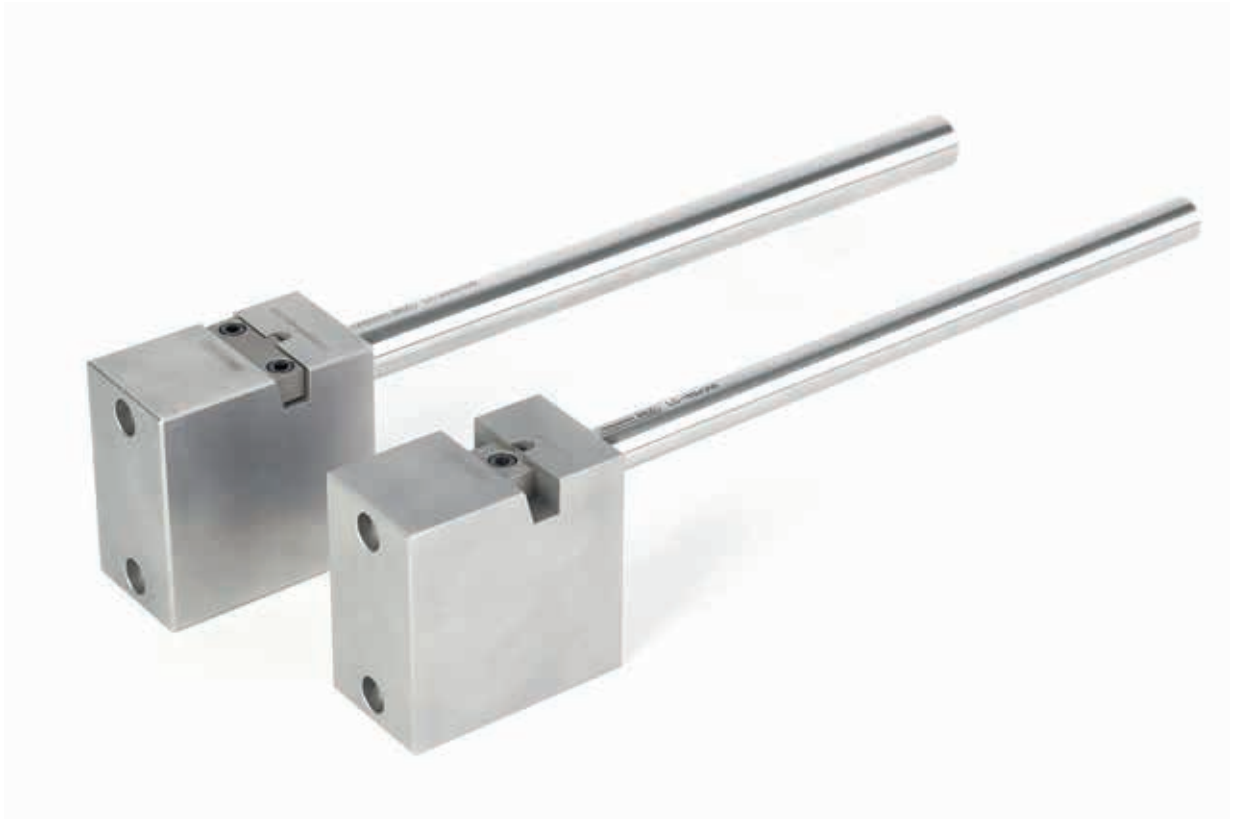
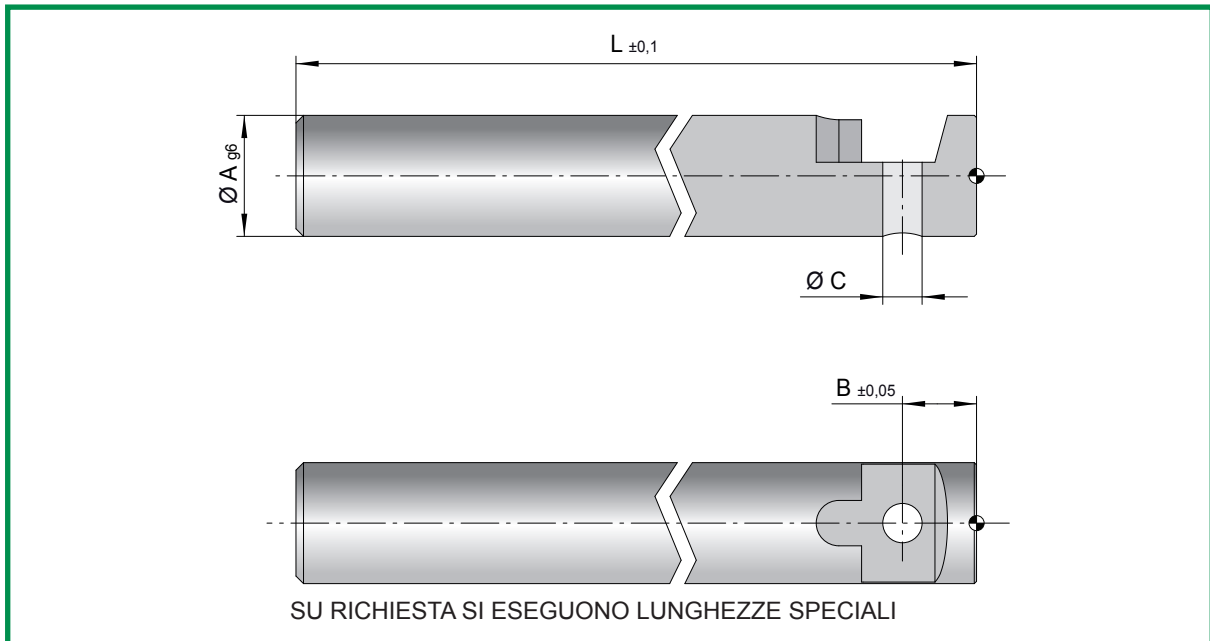


ERMANNNO BALZI



STANDARD LIFTER

STELO STANDARD LIFTER



COD.	A	B	C	L
SLS1012300	12	9,8	5,1	300
SLS1012500	12	9,8	5,1	500
SLS1016300	16	9,8	5,1	300
SLS1016500	16	9,8	5,1	500
SLS1020300	20	9,8	5,1	300
SLS1020500	20	9,8	5,1	500
SLS1025400	25	12,8	6,1	400
SLS1025600	25	12,8	6,1	600

Mat.: 1.1213

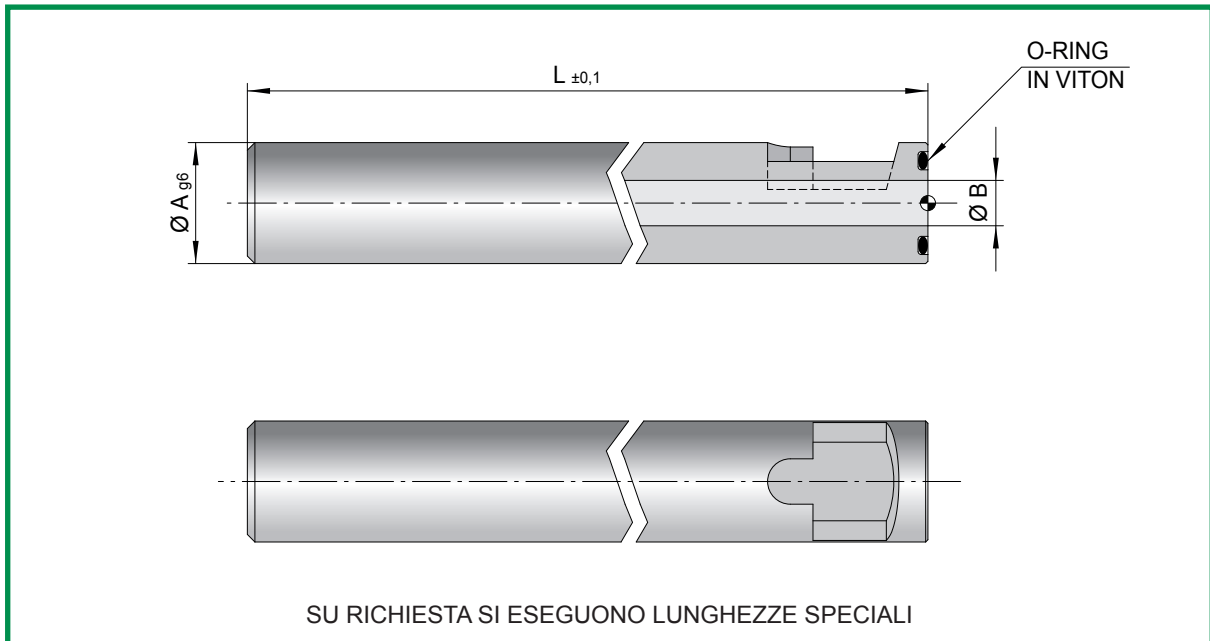
Durezza: 61-64 HRC Profondità 1,5-2mm

COD.	A	B	C	L
SLS2012300	12	9,8	5,1	300
SLS2012500	12	9,8	5,1	500
SLS2016300	16	9,8	5,1	300
SLS2016500	16	9,8	5,1	500
SLS2020300	20	9,8	5,1	300
SLS2020500	20	9,8	5,1	500
SLS2025400	25	12,8	6,1	400
SLS2025600	25	12,8	6,1	600

Mat.: 1.2343

Durezza: Superficie >950 Vickers - HV 0,3

STELO RAFFREDDATO STANDARD LIFTER



COD.	A	B	L
SLSR1012300	12	6	300
SLSR1012500	12	6	500
SLSR1016300	16	6	300
SLSR1016500	16	6	500
SLSR1020300	20	8	300
SLSR1020500	20	8	500
SLSR1025400	25	8	400
SLSR1025600	25	8	600

Mat.: 1.1213

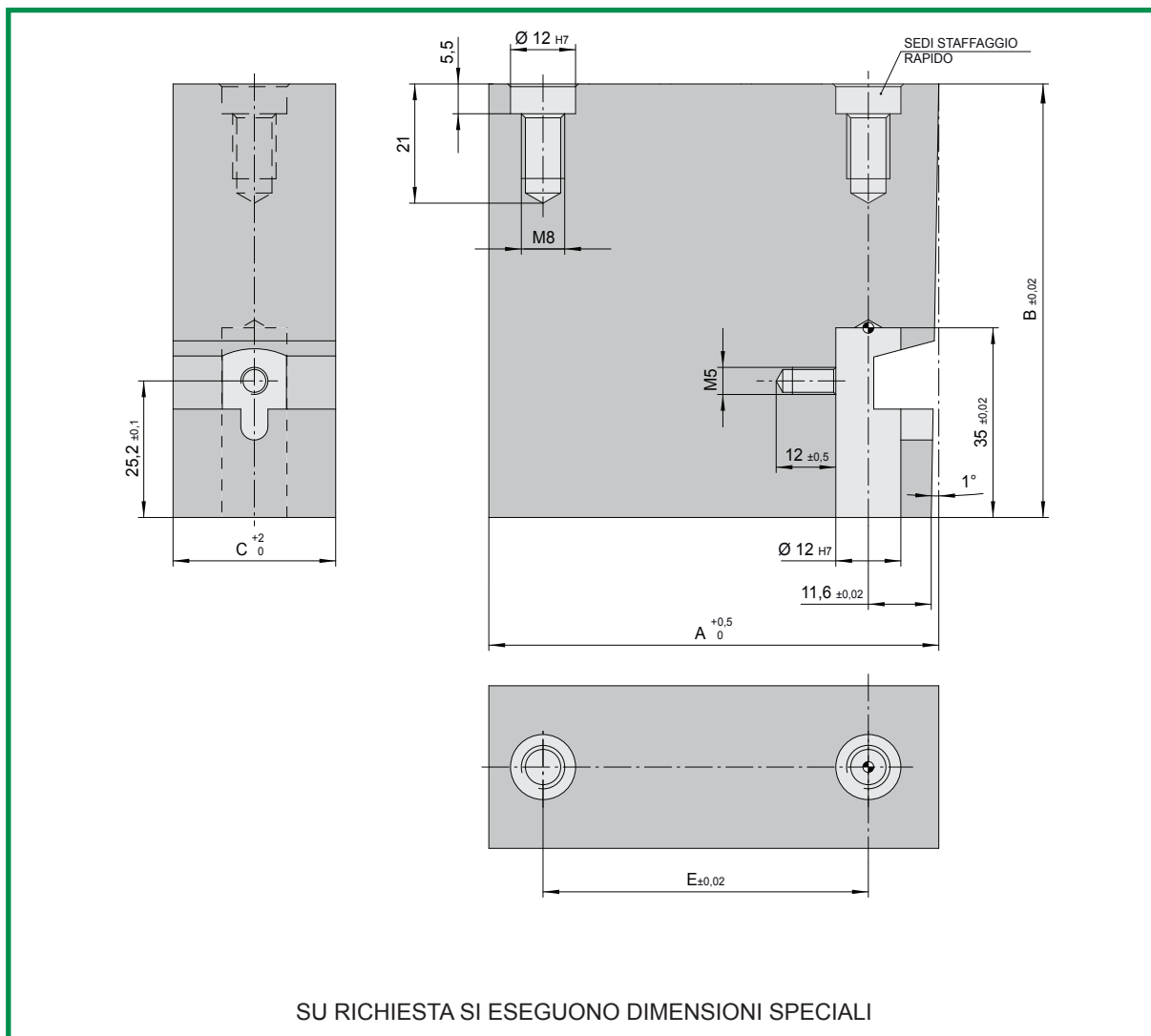
Durezza: 61-64 HRC Profondità 1,5-2mm

COD.	A	B	L
SLSR2012300	12	6	300
SLSR2012500	12	6	500
SLSR2016300	16	6	300
SLSR2016500	16	6	500
SLSR2020300	20	8	300
SLSR2020500	20	8	500
SLSR2025400	25	8	400
SLSR2025600	25	8	600

Mat.: 1.2343

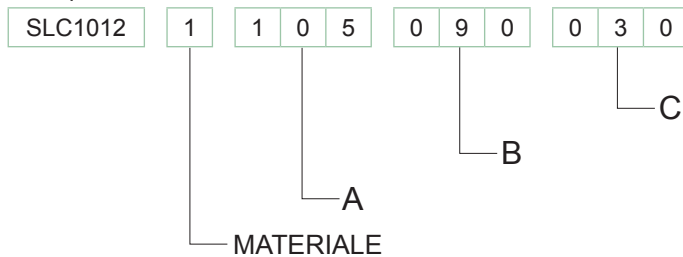
Durezza: Superficie >950 Vickers - HV 0,3

CORPO STANDARD LIFTER 12

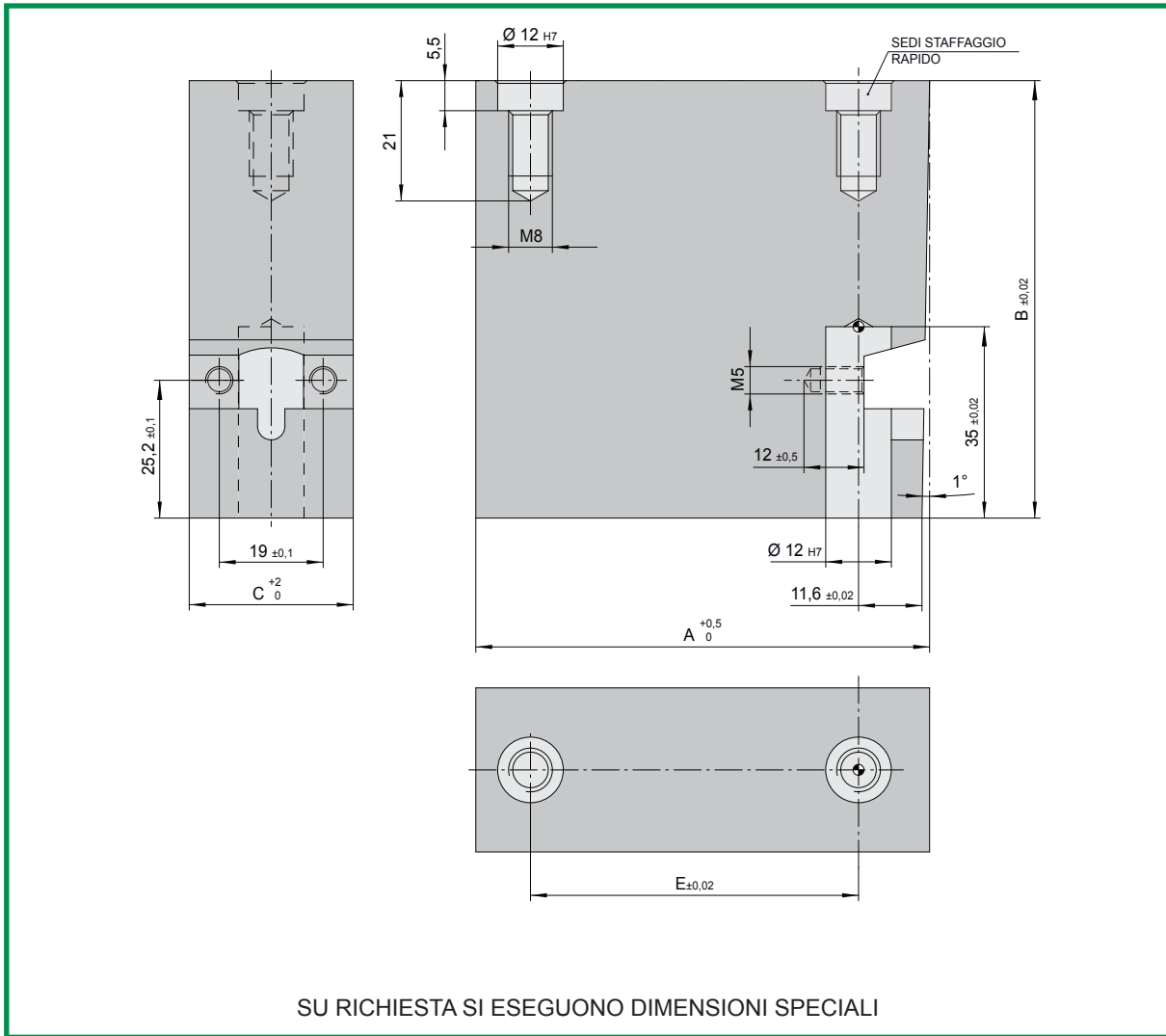


COD.	Materiale	A	E	B	C
SLC1012	1 = 1.2738 2 = 1.2343 (48+50 HRC)	70	40	70	20
		90	60	90	30
		105	80	105	40
		120		120	

Esempio ordinazione:

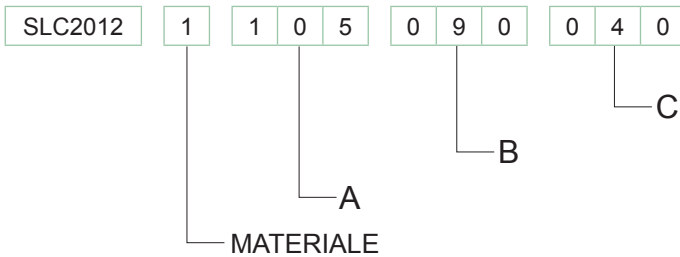


CORPO STANDARD LIFTER 12

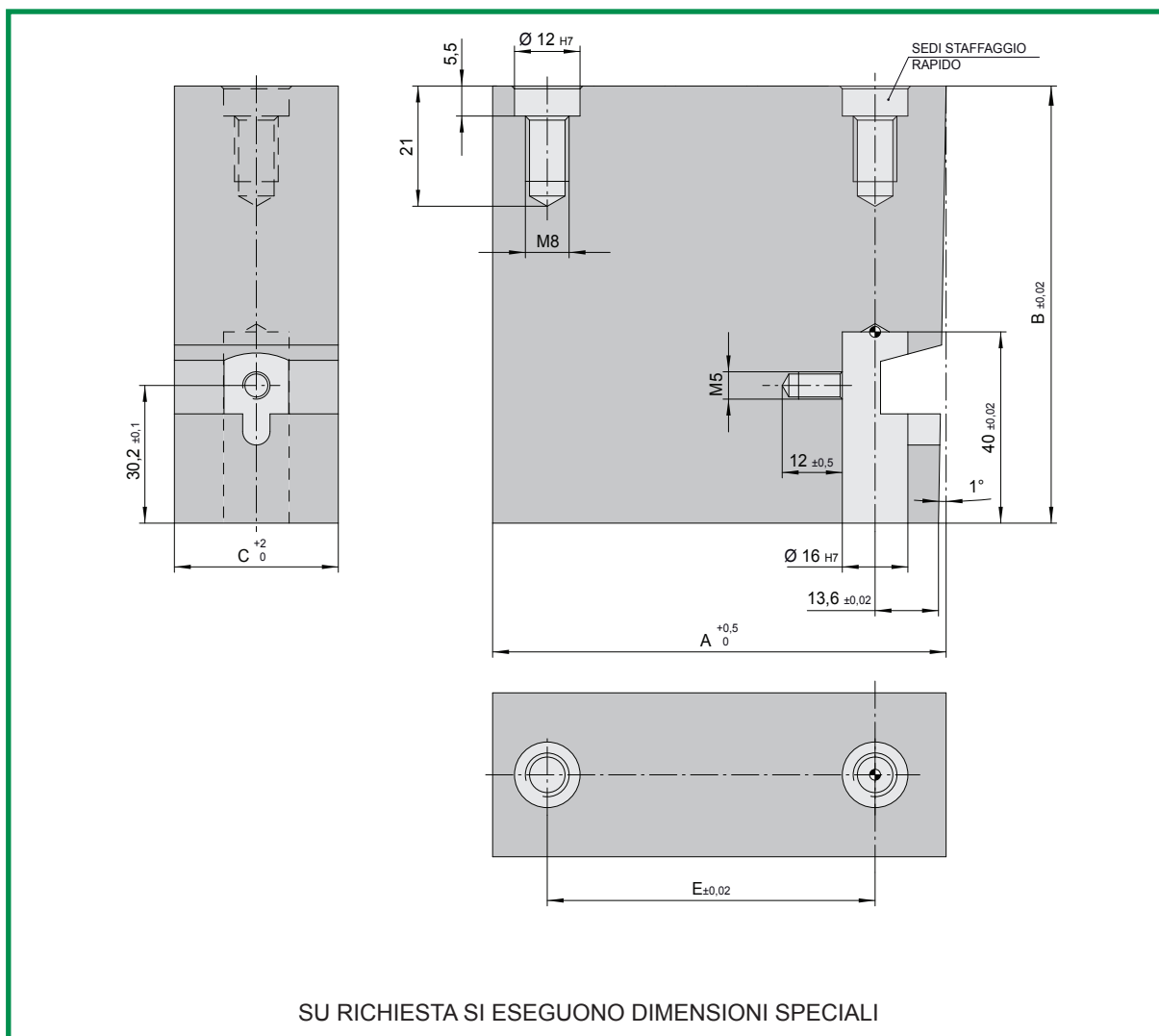


COD.	Materiale	A	E	B	C
SLC2012	1 = 1.2738 2 = 1.2343 (48-50 HRC)	70	40	70	40
		90	60	90	
		105	80	105	
		120		120	

Esempio ordinazione:

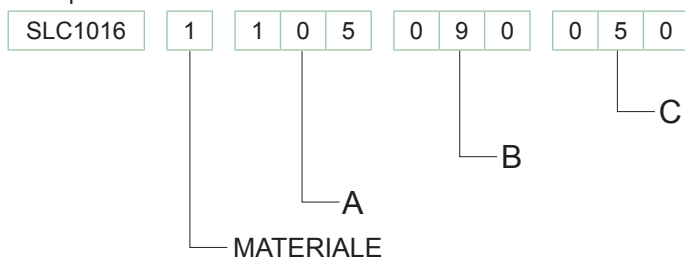


CORPO STANDARD LIFTER 16

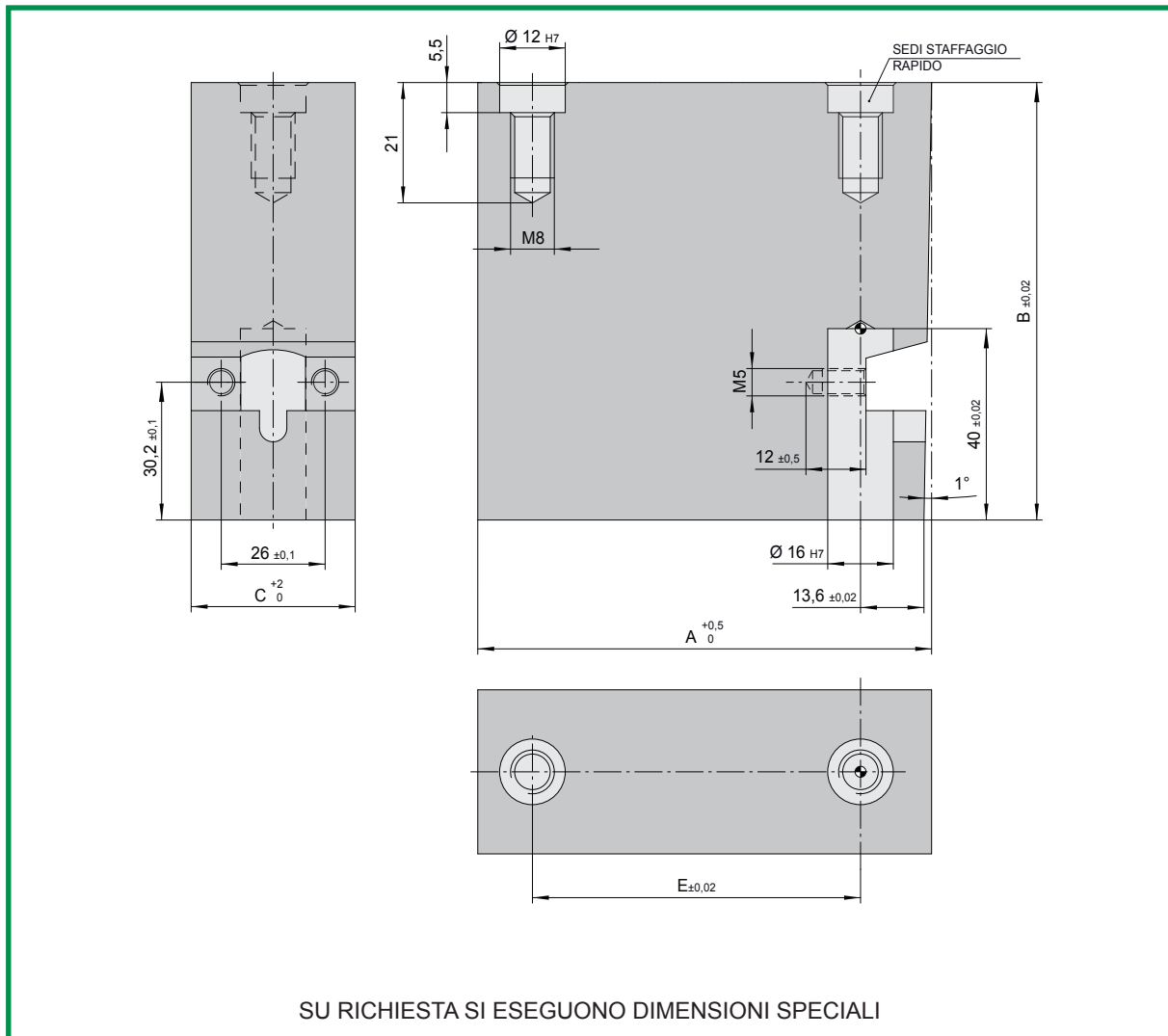


COD.	Materiale	A	E	B	C
SLC1016	1 = 1.2738 2 = 1.2343 (48-50 HRC)	70	40	70	30
		90	60		90
		105	80	105	50
		120		120	60

Esempio ordinazione:

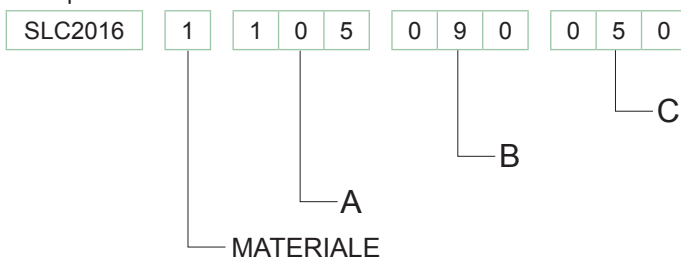


CORPO STANDARD LIFTER 16

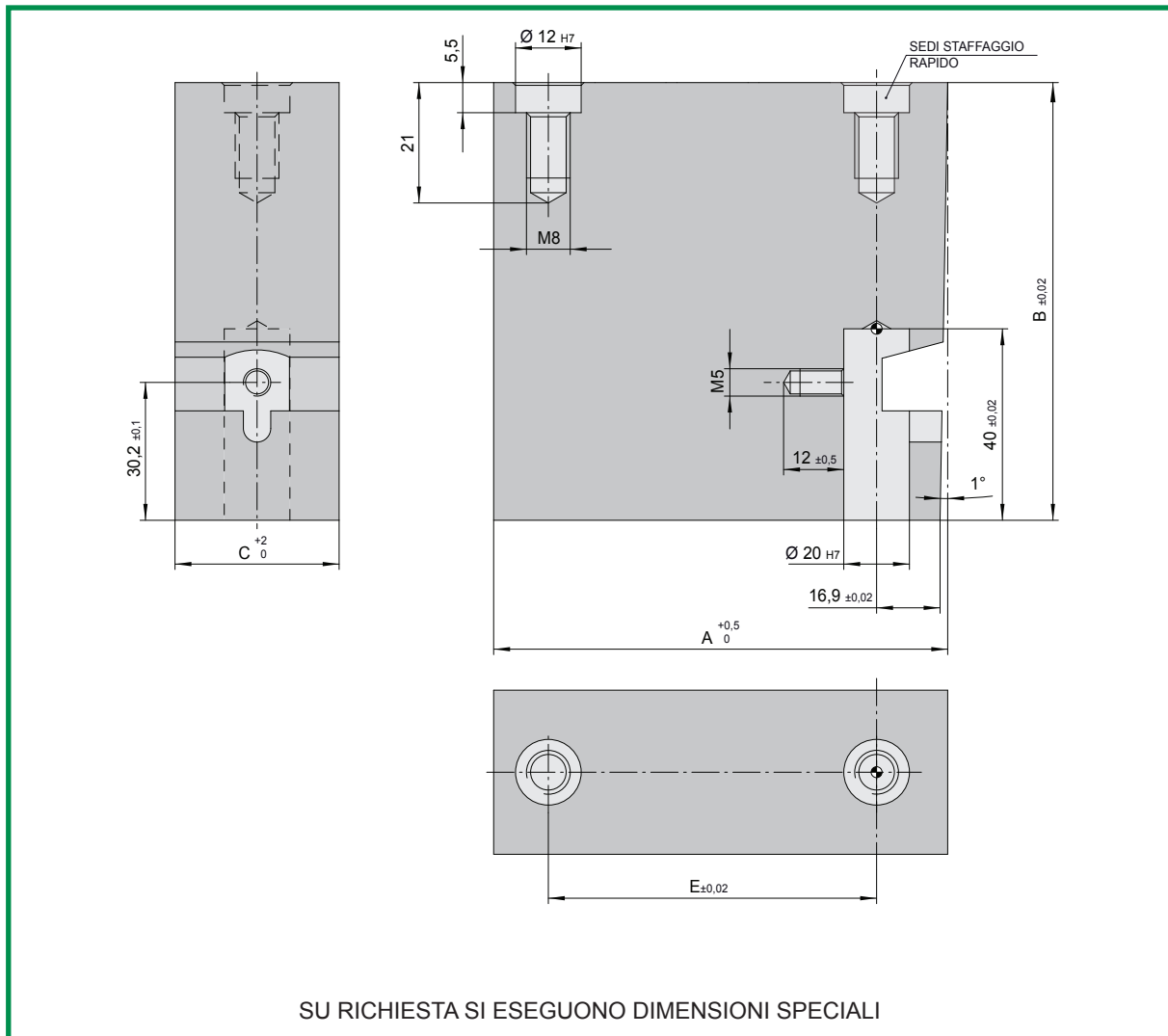


COD.	Materiale	A	E	B	C
SLC2016	1 = 1.2738 2 = 1.2343 (48-50 HRC)	70	40	70	40
		90	60	90	50
		105	80	105	60
		120		120	

Esempio ordinazione:

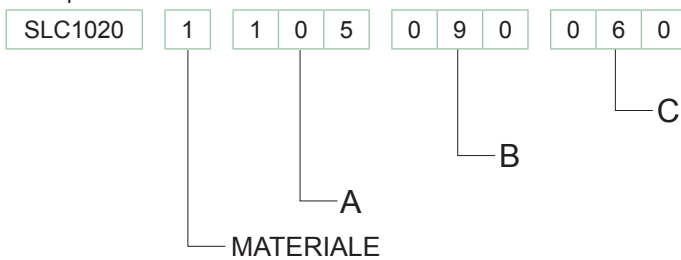


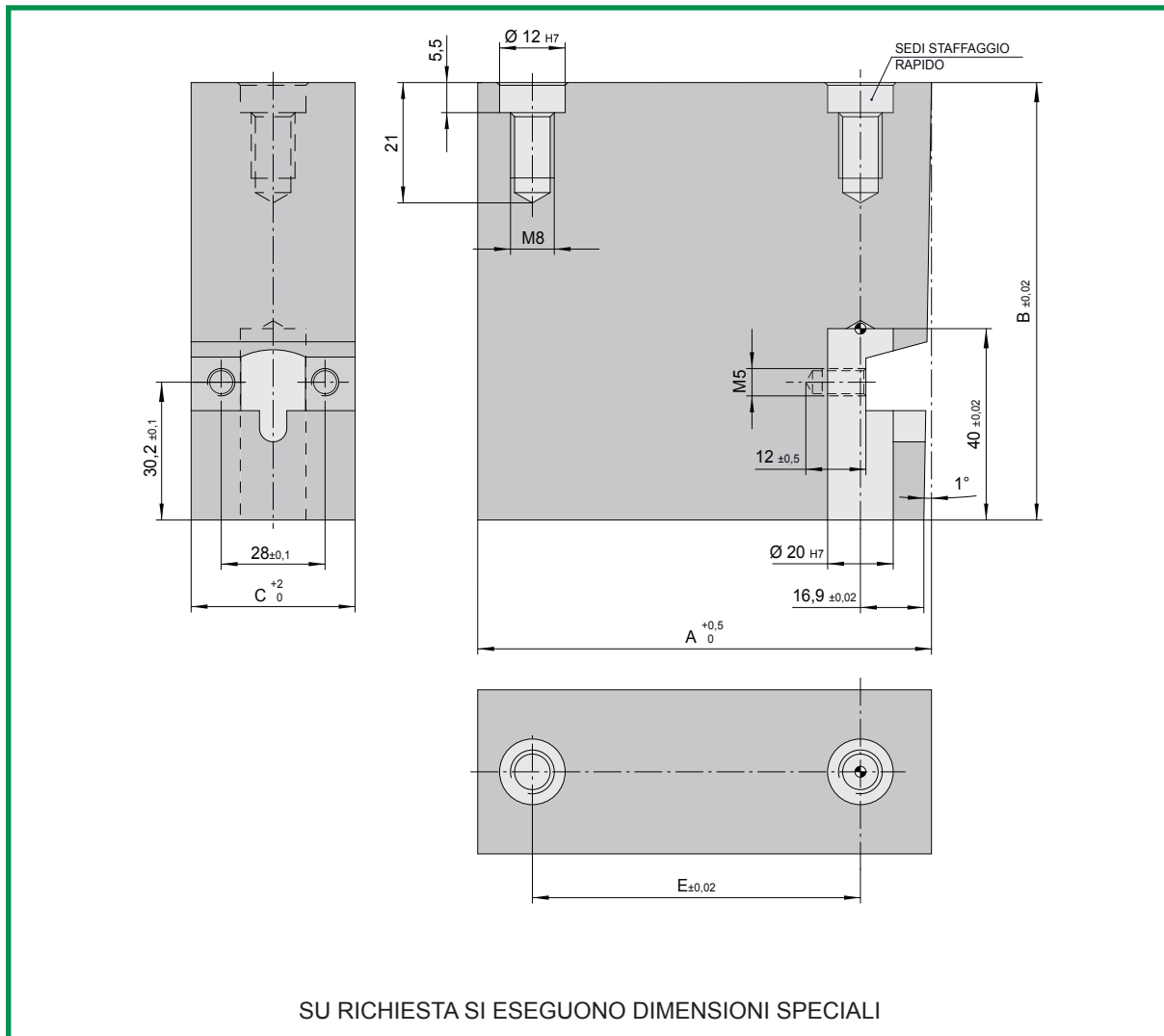
CORPO STANDARD LIFTER 20



COD.	Materiale	A	E	B	C
SLC1020	1 = 1.2738 2 = 1.2343 (48-50 HRC)	70	40	70	40
		90	60	90	50
		105		105	60
		120	80	120	70
					80

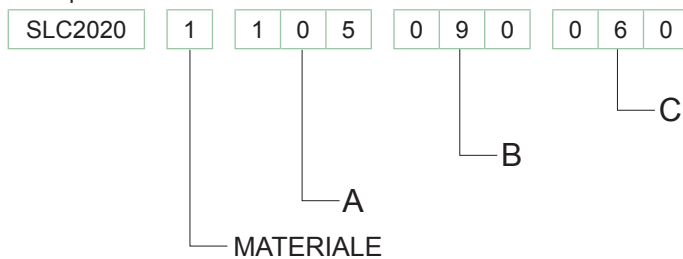
Esempio ordinazione:



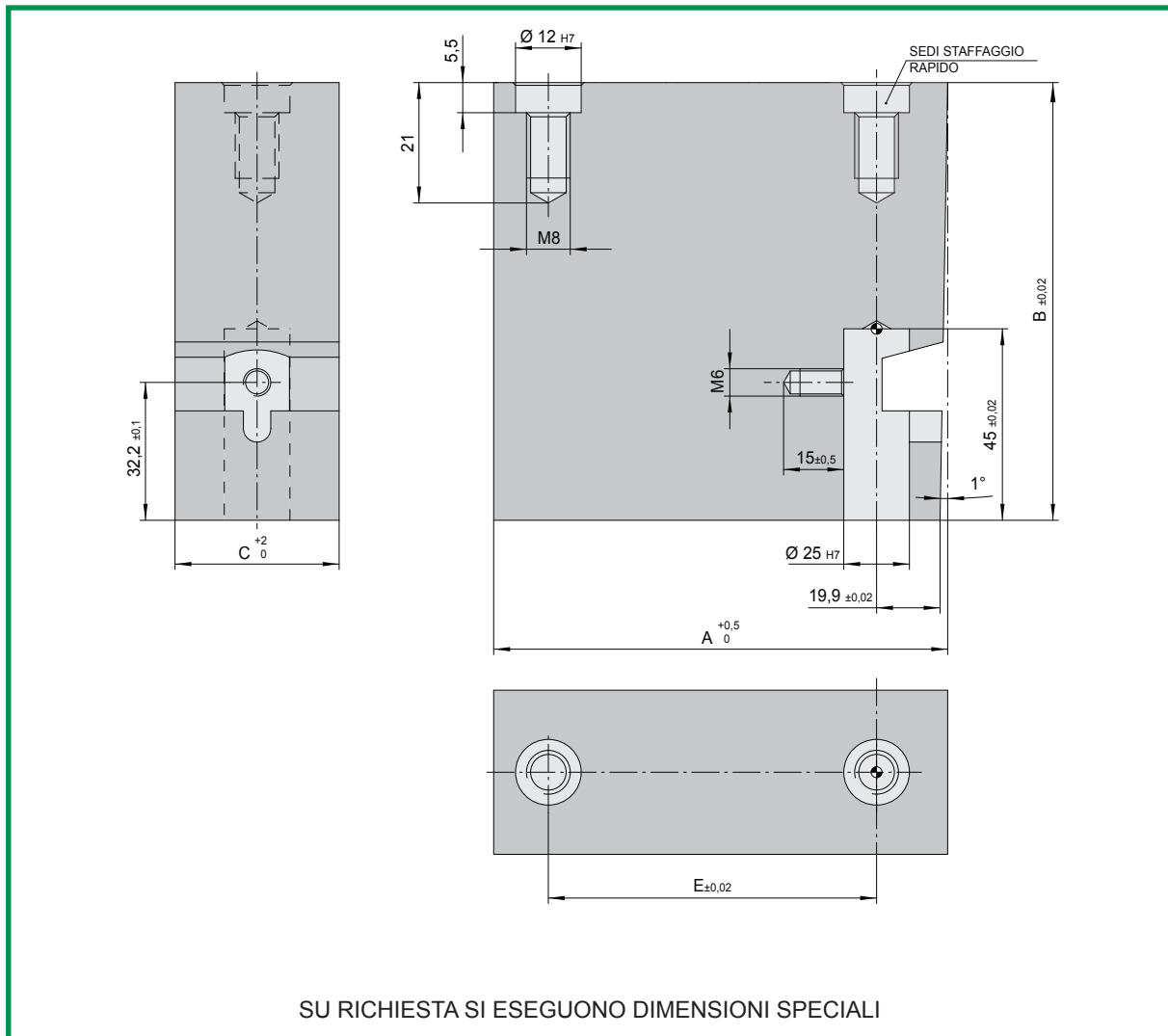


COD.	Materiale	A	E	B	C
SLC2020	1 = 1.2738 2 = 1.2343 (48-50 HRC)	70	40	70	40
		90	60	90	50
		105		105	60
		120	80	120	70
					80

Esempio ordinazione:

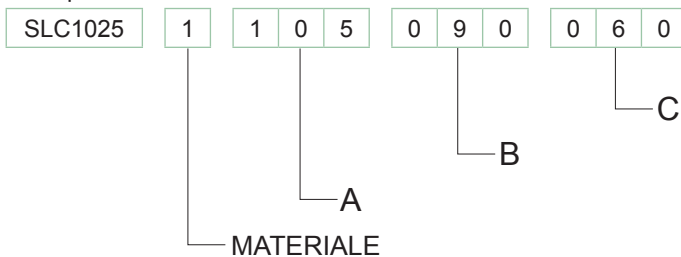


CORPO STANDARD LIFTER 25

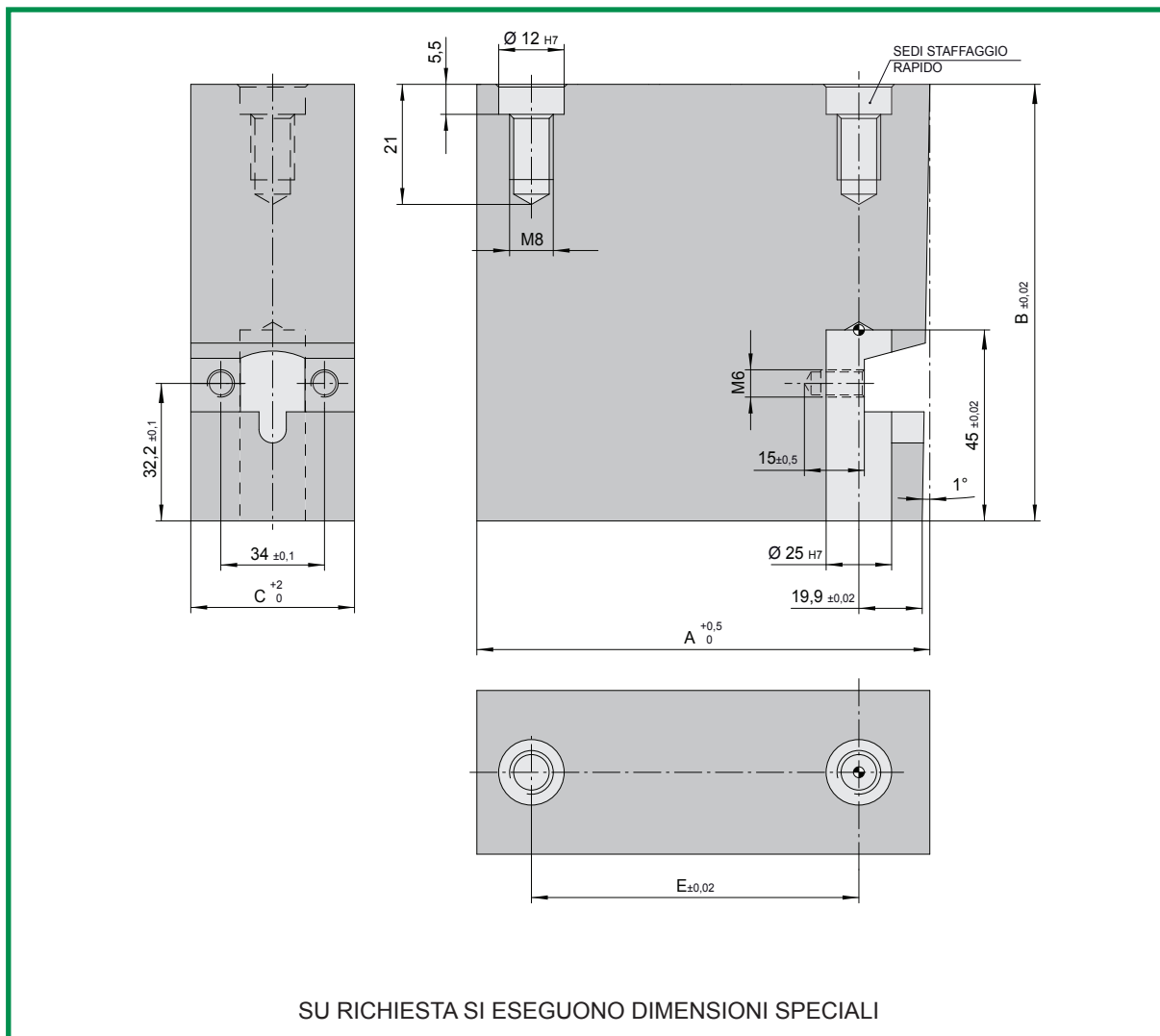


COD.	Materiale	A	E	B	C
SLC1025	1 = 1.2738 2 = 1.2343 (48-50 HRC)	70	40	70	50
		90	60	90	60
		105		105	70
		120	80	120	80

Esempio ordinazione:

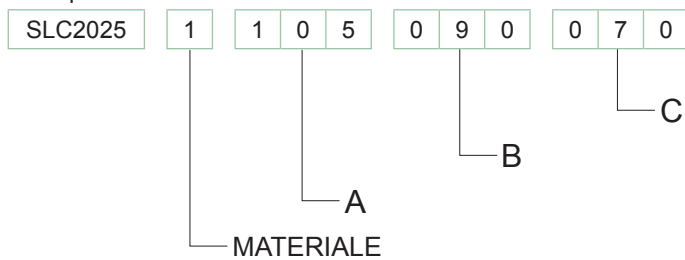


CORPO STANDARD LIFTER 25

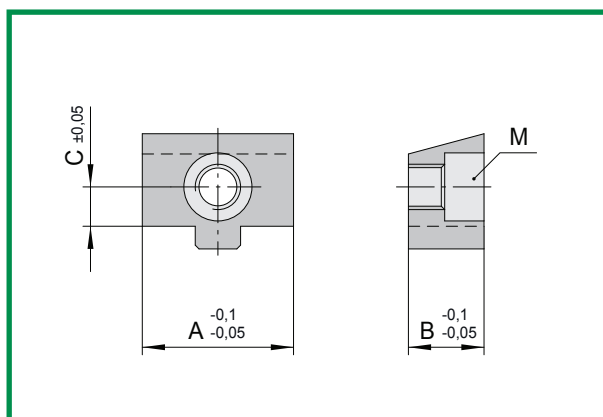


COD.	Materiale	A	E	B	C
SLC2025	1 = 1.2738 2 = 1.2343 (48-50 HRC)	70	40	70	50
		90	60		60
		105	60		90
		120	80	105	90
					100
					110
				120	

Esempio ordinazione:

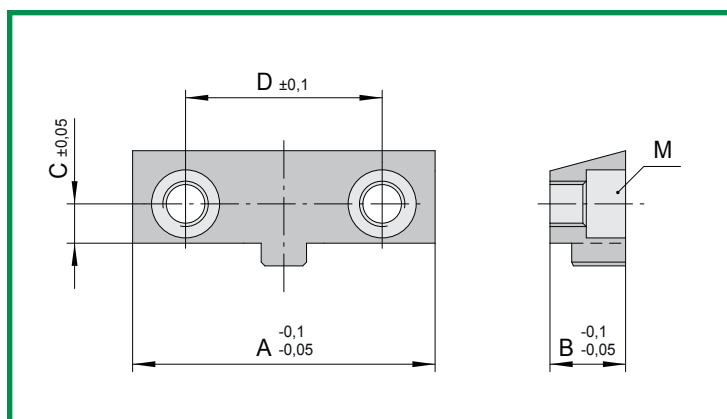


CHIAVETTE STANDARD LIFTER



COD.	A	B	C	M
SLK1012102	15	10	5,2	M5x20
SLK1016508	20	10	5,2	M5x22
SLK1020304	25	10	5,2	M5x28
SLK1025001	30	12	7,2	M6x35

Mat.: 1.2343
Durezza: 44-46 HRC



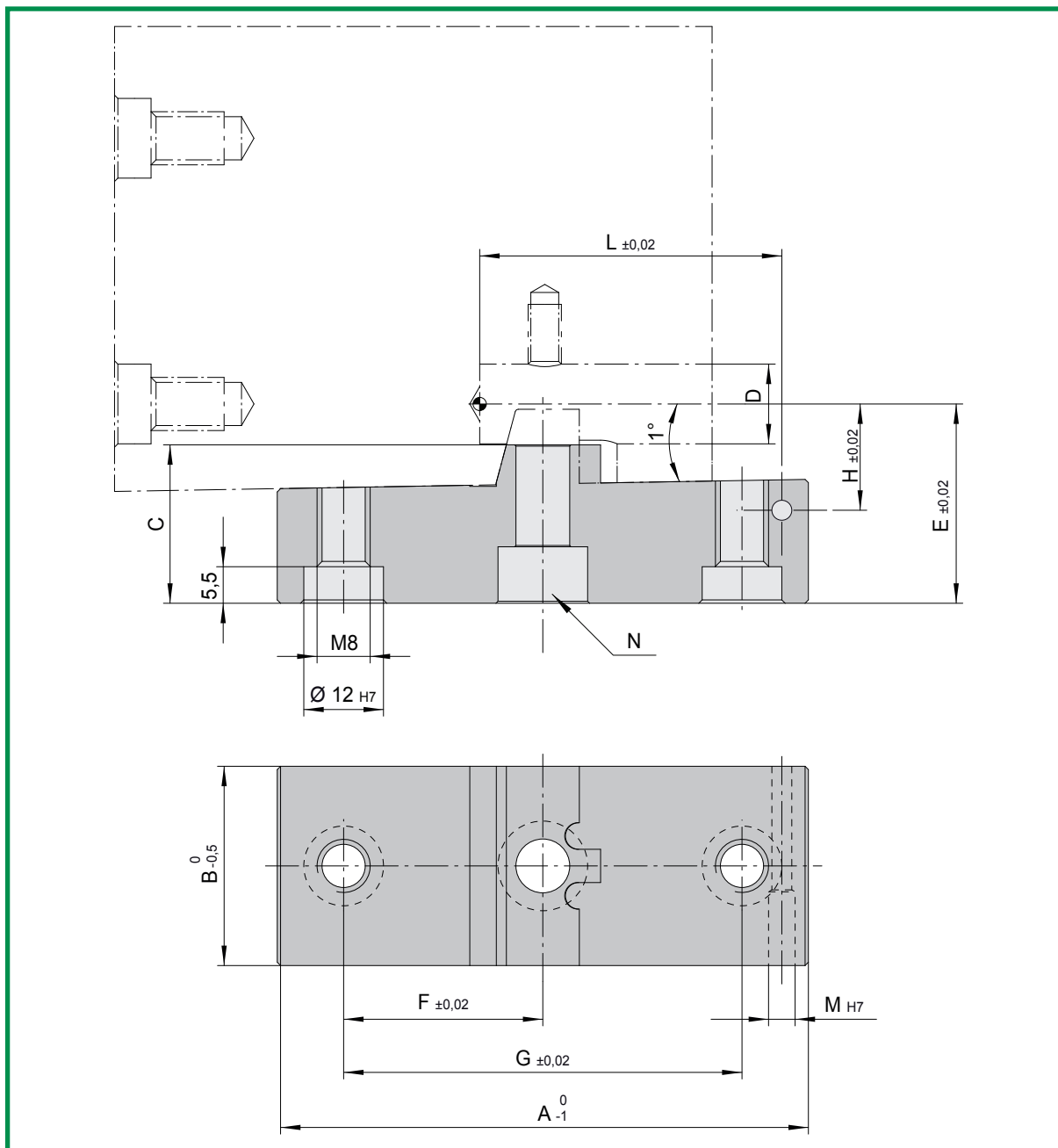
COD.	A	B	C	D	M	COMPATIBILE SLSR
SLK2012102	30	10	5,2	19	M5x12	
SLK2012102R	30	10	5,2	19	M5x12	✓
SLK2016508	40	10	5,2	26	M5x12	
SLK2016508R	40	10	5,2	26	M5x12	✓
SLK2020304	40	10	5,2	28	M5x12	✓
SLK2025001	50	12	7,2	34	M6x16	✓

Mat.: 1.2343
Durezza: 44-46 HRC

ERMANN BALZI

PATENT PENDING

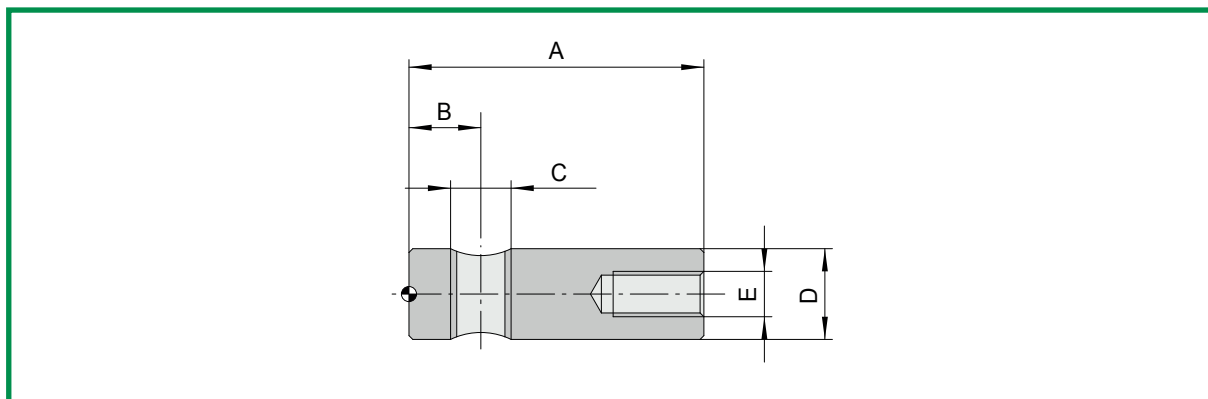
DISTANZIALE STANDARD LIFTER



COD.	A	B	C	D	E	F	G	H	L	M	N
SLD012102	85	30	28,8	12	35	30	60	20	47,5	6	M8x30
SLD016508	85	40	28,8	16	37	30	60	22	47,5	6	M8x35
SLD020304	85	40	28,8	20	39	30	60	24	47,5	6	M8x35
SLD025001	85	50	29,3	25	42	30	60	27	51	6	M10x40

Mat.: 1.1191

PERNO DI BLOCCAGGIO STANDARD LIFTER



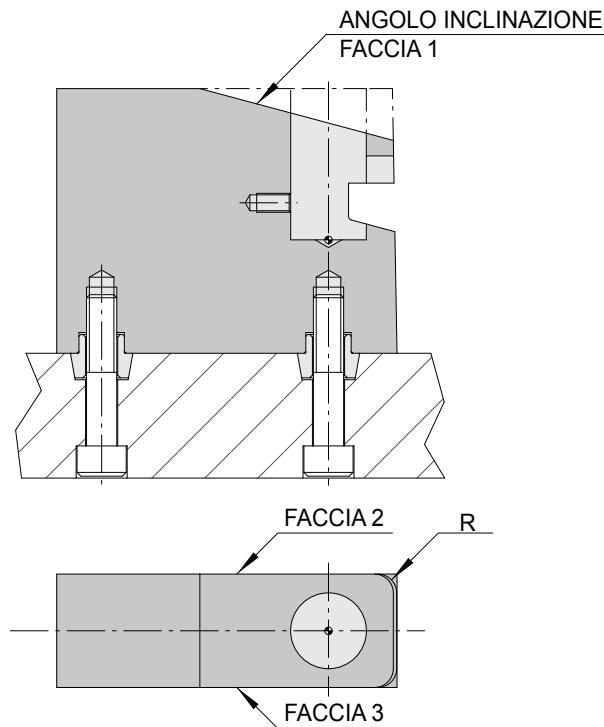
COD.	A	B	C	D	E
SLP012	34	9,5	M8	12	M6
SLP016	39	9,5	M8	16	M6
SLP020	39	9,5	M8	20	M6
SLP025	44	13	M10	25	M6

Mat.: 1.7225

LAVORAZIONE IN DUE FASI

FASE 1

Fresatrici a 3 o 5 assi: fissaggio con sistema rapido o tramite morsa e lavorazione di tutte le facce disponibili.

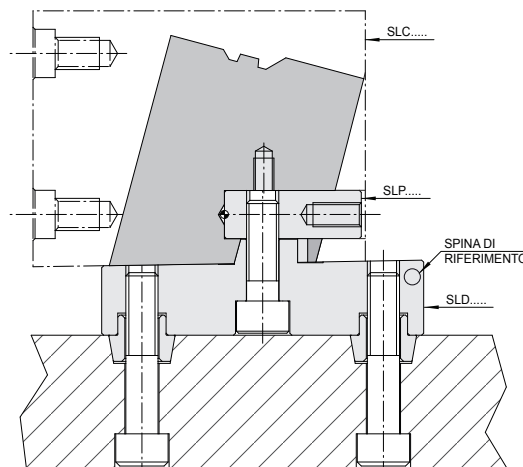


FASE 2

Le lavorazioni delle facce restanti vengono realizzate tramite l'utilizzo dell'apposito distanziale codice SLD ...

Una volta vincolato il corpo al distanziale è possibile procedere come segue:

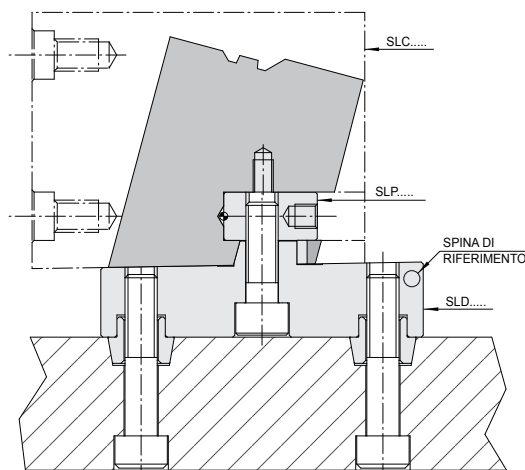
- Fresatrici a 3 assi: fissaggio in morsa con necessaria inclinazione e azzeramento pezzo tramite spina di riferimento;
- Fresatrici a 5 assi: fissaggio in morsa o tramite staffaggio rapido con azzeramento automatico.



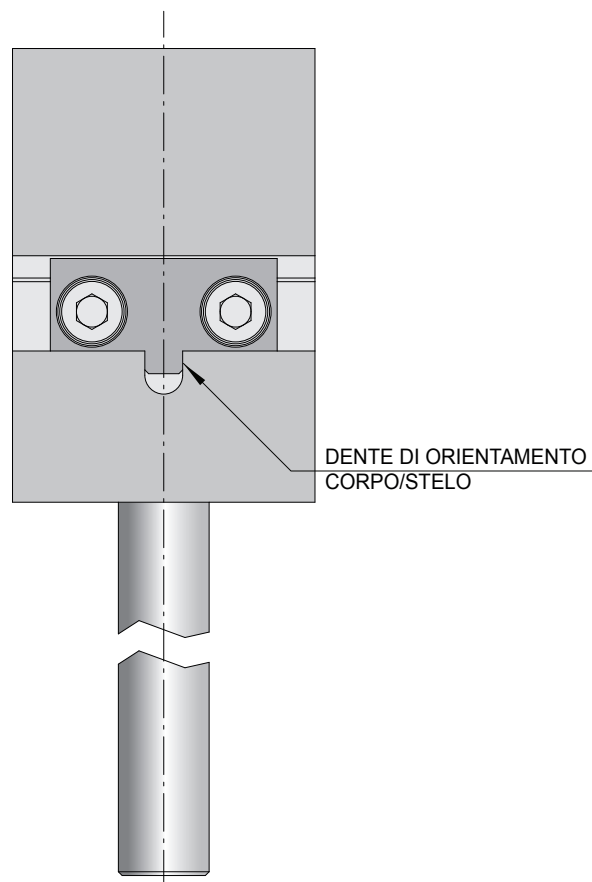
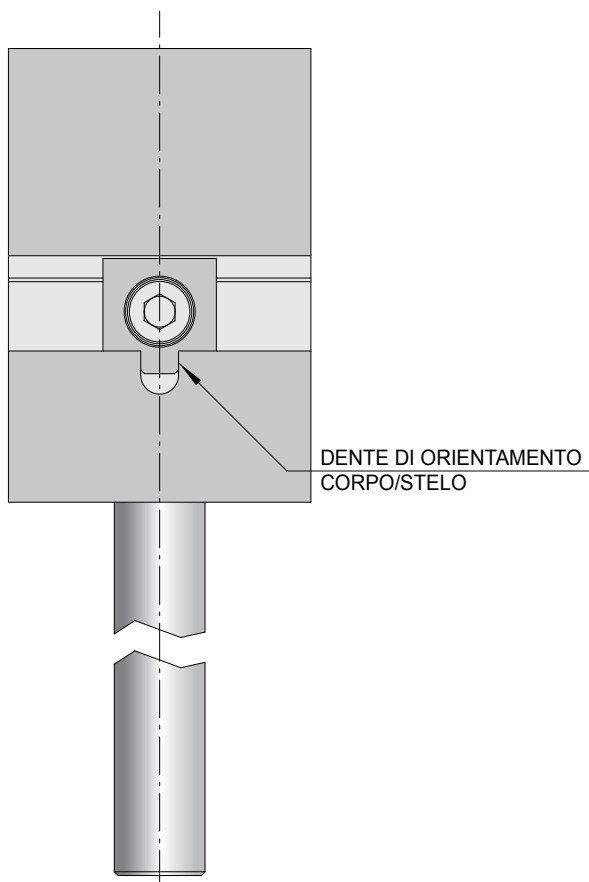
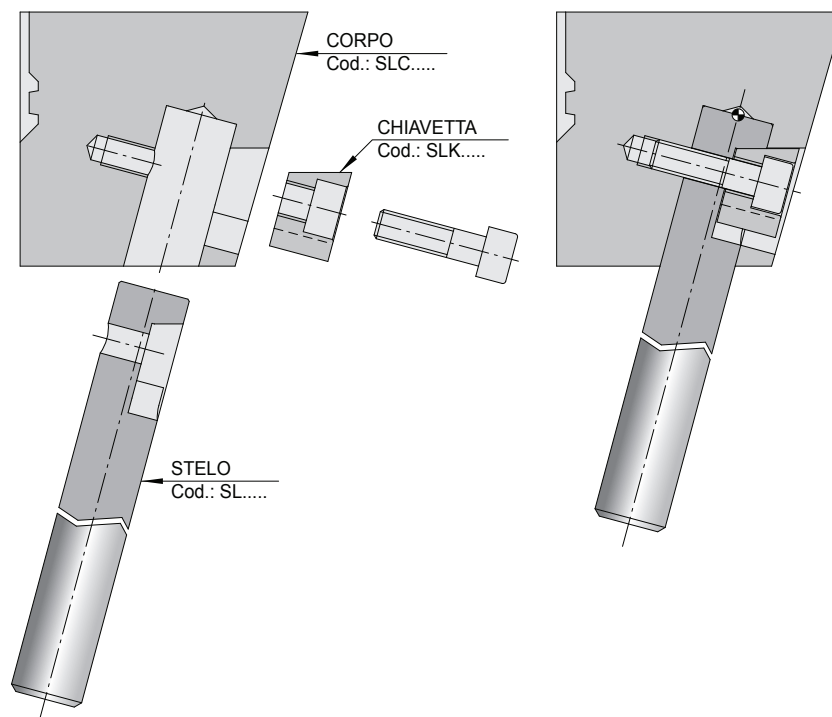
LAVORAZINE IN UNA FASE

Con fresatrici a 5 assi è anche possibile sagomare il corpo Standard Lifter in una sola fase di lavorazione:

- assemblaggio del corpo Standard Lifter SLC...con apposito distanziale codice SLD... tramite perno di bloccaggio SLP...;
- fissaggio tramite morsa o staffaggio rapido e lavorazione del corpo.



L'assemblaggio tra corpo e stelo si ottiene in modo semplice, preciso e sicuro grazie alla conformazione della chiavetta e alle relative viti di fissaggio.







ERMANN BALZI

Viale Enrico Mattei, 13
25080 Mazzano (Brescia)
Tel: +39 0302120868
E-mail: info@ermannobalzi.com