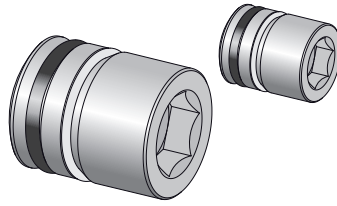
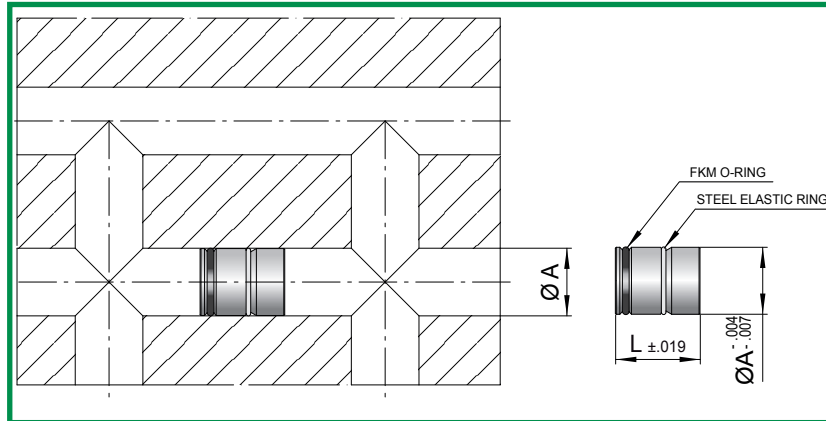


# PLUG FOR THE DEVIATION OF THE FLOW

RAPID PLUG AND UNPLUG SYSTEM  
(PATENTED SYSTEM)



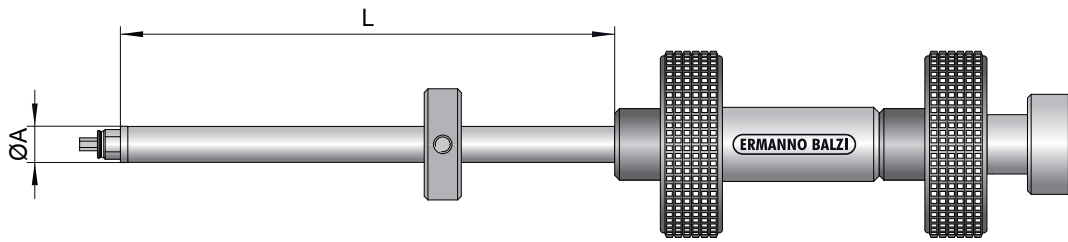
CODE.: **TR-..F**



CODE	A	L	ASSEMBLY DEVICE
TRI-1/4	.249	.472	APT-0
TRI-Q	.338	.590	APT-1
TRI-7/16	.437	.689	APT-2
TRI-37/64	.577	.689	
TRI-23/32	.718	.866	APT-3
TRI-59/64	.921	.866	
TRI-1" 5/32	1.156	.866	

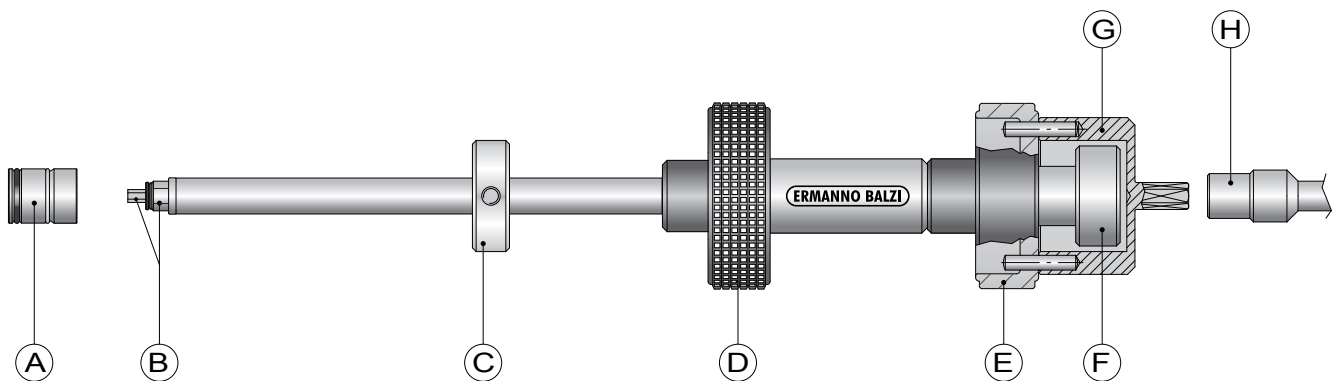
## CHARACTERISTICS

- 1) RAPID PLUG FITTING AND REMOVING;
- 2) UNLIMITED PLUG REUTILIZATION;
- 3) POSSIBLE PLUG SECURING FOR HOLES WITH INCREASED DIAMETER (UP  $\text{ØA} + .011 \div .015$ ).



CODE	Ø	L
APT-0	.232	9.842
APT-1	.300	15.748
APT-2	.380	31.496
APT-3	.550	39.370

ON DEMAND THE ROD CAN BE SUPPLIED IN SPECIAL LENGTHS



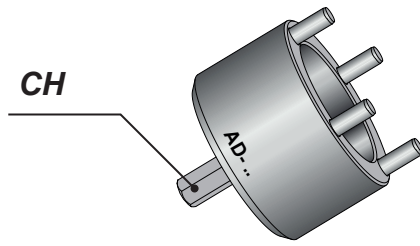
## PLUGS ASSEMBLY

1. Assemble the plug "A" around two hexagons "B" verifying that it's well inserted.
2. Holding the handle "E" tight, screw the handle "F", locking it with a light pressure.
3. Verify that the plug is hooked to the rod.
4. Insert the rod in the hole determining the depth position with the ring nut "C".
5. Connect the torque adaptor "G" to the handle "E", holding the handle "D" rotate the torque adaptor "G" with a torque screwdriver "H" counter-clockwise. Torque force will have to be set according to suggested value.
6. Holding the handle "E" tight, unscrew the handle "F" (1 or 2 turns are enough).
7. Unthread the rod preferably by the handle "D".

## PLUGS DISASSEMBLY

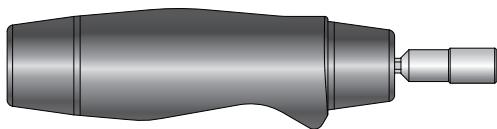
1. Insert the rod in the hole and, slightly rotating the handle "D" and "E", apply a light pressure on the plug until the two hexagons "B" have entered in their seats. (The operation has completed when the handle "D" and "E" does not rotate anymore).
2. Holding the handle "E" tight, screw the handle "F" locking it with a light pressure and verify that the plug is connected, then pull the rod towards outside.
3. Holding the handle "D" tight, unlock the handle "E" clockwise.
4. Remove APT tool from the bore and unscrew the plug from APT rod.

# TORQUE ADAPTOR



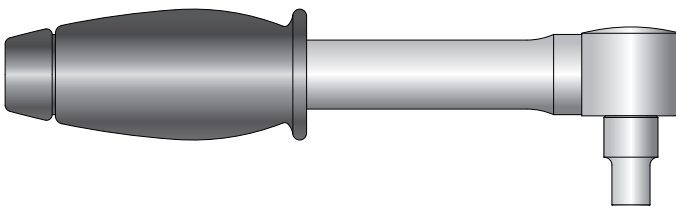
CODE	ASSEMBLY DEVICE	PLUGS	TORQUE FORCE (Nm)	PRESSURE (BAR)	CH
AD-0	APT-0	TRI-1/4	1,5	40	1/4
		TRI-Q	2	40	
AD-1/2	APT-1	TRI-7/16	5	30	
	APT-2	TRI-37/64	6	30	
AD-3	APT-3	TRI-23/32	15	30	3/8
		TRI-59/64	15	20	
		TRI-1" 5/32	18	10	

## TORQUE BAR FOR LEFT-HAND TIGHTENING



CODE.: **TS-1,2/6**

TORQUE RANGE:  
1,2÷6 N/m



CODE.: **TB-4/20**

TORQUE RANGE:  
4÷20 N/m